



Lonely Lion

# Remanufactured Excavators Catalogue





**Lonely Lion**

# **Remanufactured Excavators Catalogue**



# Company Introduction

## About Us

We are a professional supplier of high-quality remanufactured excavators from China, specializing in global export markets including Africa, Southeast Asia, the Middle East, and South America. With years of experience in construction machinery, we provide reliable equipment with OEM-level rebuilding standards, competitive pricing, and stable supply capacity.

## Our Advantages

- Wide range of brands and models
- Strong remanufacturing capability
- Strict quality inspection system
- Fast delivery and global logistics support



## Why Choose Remanufactured Excavators

### Cost Efficiency

Save 30%–60% compared to brand-new machines.

### Reliable Quality

Rebuilt based on industrial standards with tested performance.

### Fast Delivery

Short lead time compared to new equipment.

### High ROI

Ideal for contractors, rental companies, and project owners.

## Remanufacturing Process

Each excavator goes through a complete rebuilding process:

1. Machine disassembly
2. Engine inspection and overhaul
3. Hydraulic system repair and replacement
4. Structural reinforcement
5. Painting and finishing
6. Full machine testing



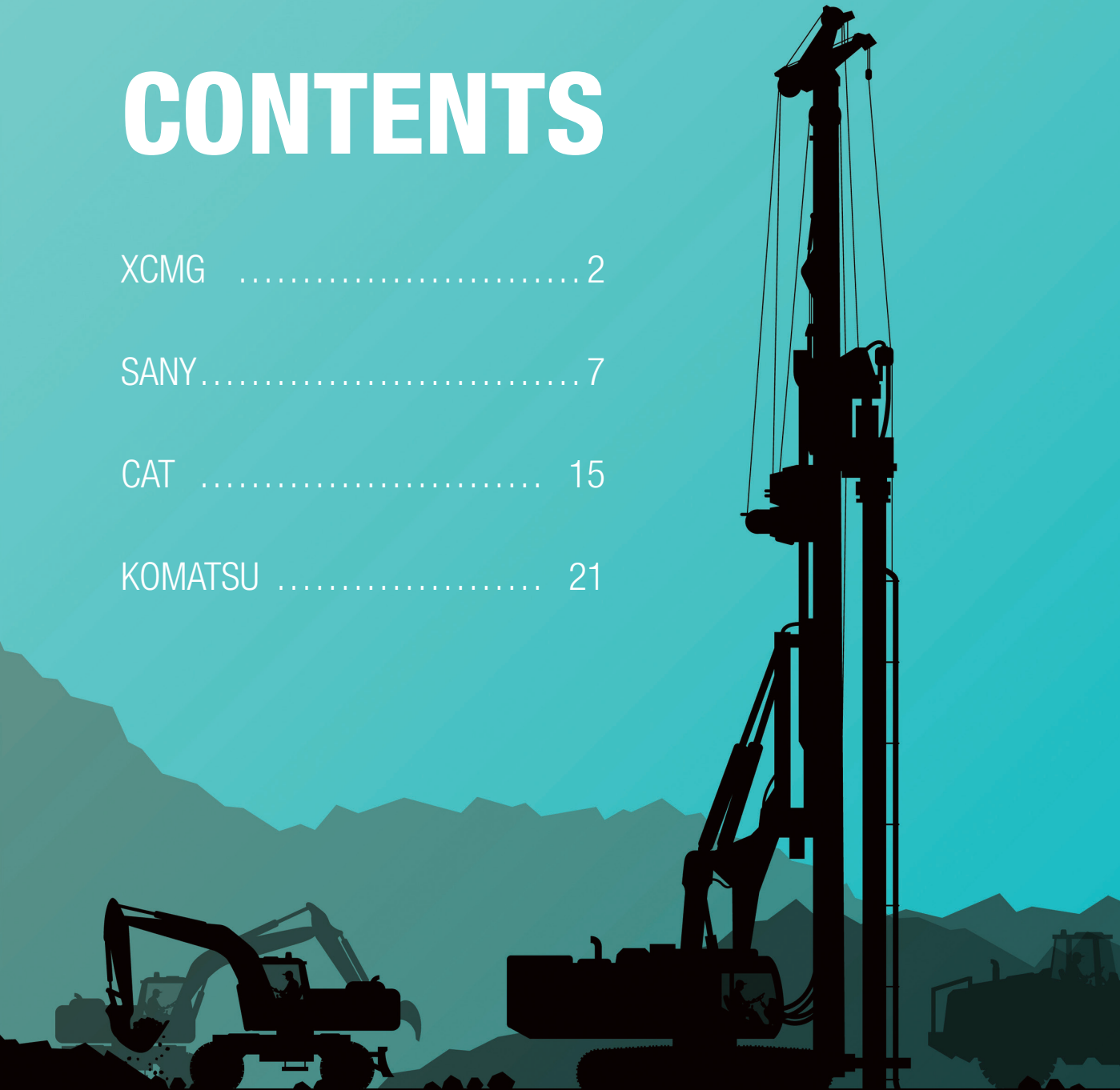
# CONTENTS

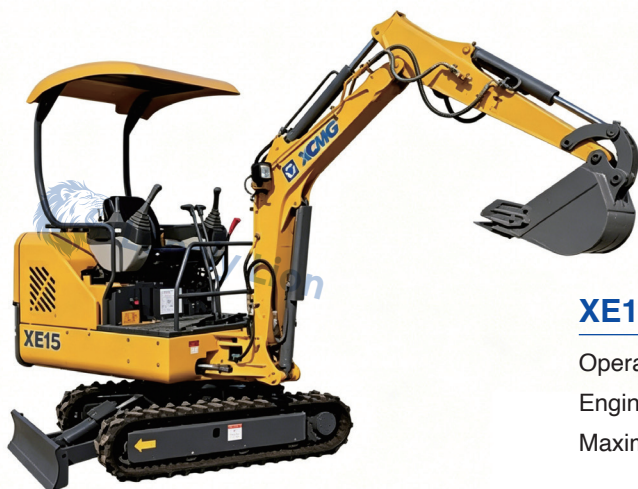
XCMG .....2

SANY .....7

CAT ..... 15

KOMATSU ..... 21





### **XE15**

Operating Weight: 1.7–1.8 t

Engine Power: 9.8–15.4 kW (13–21 HP)

Maximum Digging Depth: 2.29–2.32 m

### **XE17U**

Operating Weight: 1.7–1.8 t

Engine Power: 11.8–14.6 kW (15.8–19.6 HP)

Maximum Digging Depth: 2.29–2.45 m



### **XE20**

Operating Weight: 1.95–2.05 t

Engine Power: 11.8 kW (15.8 HP)

Maximum Digging Depth: 2.56–2.58 m



### **XE55**

Operating Weight: 5.7–5.9 t

Engine Power: 30–36 kW (40–48 HP)

Maximum Digging Depth: 3.7–3.9 m



### **XE60**

Operating Weight: 5.9–6.1 t

Engine Power: 36–40 kW (48–54 HP)

Maximum Digging Depth: 3.8–4.0 m

### **XE75**

Operating Weight: 7.3–7.6 t

Engine Power: 40–53 kW (54–71 HP)

Maximum Digging Depth: 4.0–4.2 m





### **XE80**

Operating Weight: 7.8–8.2 t  
Engine Power: 53–60 kW (71–80 HP)  
Maximum Digging Depth: 4.1–4.4 m

### **XE135**

Operating Weight: 13–14 t  
Engine Power: 73–86 kW (98–115 HP)  
Maximum Digging Depth: 5.4–5.6 m



### **XE155**

Operating Weight: 14.5–16 t  
Engine Power: 90–105 kW (121–141 HP)  
Maximum Digging Depth: 5.5–5.8 m



### **XE215**

Operating Weight: 21–23 t

Engine Power: 106–128 kW (142–172 HP)

Maximum Digging Depth: 6.5–6.7 m

### **XE265**

Operating Weight: 25–26.5 t

Engine Power: 135–150 kW (181–201 HP)

Maximum Digging Depth: 6.8–7.0 m



### **XE300**

Operating Weight: 30–33 t

Engine Power: 173–186 kW (232–249 HP)

Maximum Digging Depth: 7.0–7.2 m



### XE370

Operating Weight: 36.0–37.5 t  
 Engine Power: 184–212 kW (249–288 HP)  
 Maximum Digging Depth: 6.90–7.42 m

### XE470

Operating Weight: 46–47 t  
 Engine Power: 250–274 kW (335–367 HP)  
 Maximum Digging Depth: 7.0–7.8 m



### XE500

Operating Weight: 48–52 t  
 Engine Power: 320–343 kW (429–460 HP)  
 Maximum Digging Depth: 7.5–7.8 m

### XE700

Operating Weight: 68–72 t  
 Engine Power: 336–373 kW (450–500 HP)  
 Maximum Digging Depth: 7.0–7.5 m



## SY16

Operating Weight: 1.75–1.85 t  
Engine Power: 14.6–18.2 kW (19.6–24.4 HP)  
Maximum Digging Depth: 2.3–2.5 m



## SY18

Operating Weight: 1.8–2.0 t  
Engine Power: 14.6–18.2 kW (19.6–24.4 HP)  
Maximum Digging Depth: 2.3–2.6 m

## SY20

Operating Weight: 2.0–2.2 t  
Engine Power: 14.6–18.2 kW (19.6–24.4 HP)  
Maximum Digging Depth: 2.4–2.6 m



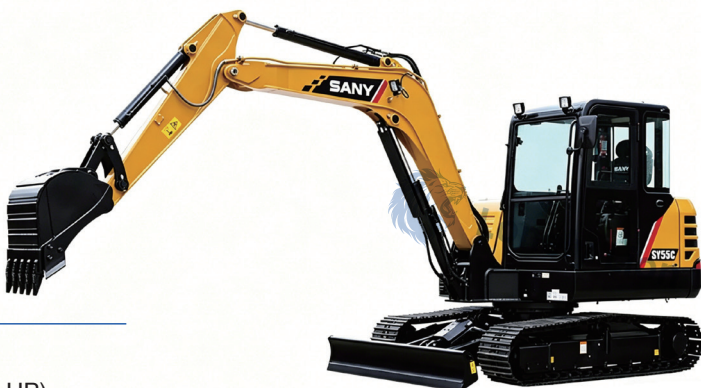


### **SY35**

Operating Weight: 3.5–4.0 t

Engine Power: 17.3–19.5 kW (23.2–26.1 HP)

Maximum Digging Depth: 3.0–3.2 m



### **SY55**

Operating Weight: 5.2–5.8 t

Engine Power: 31.2–36 kW (42–48 HP)

Maximum Digging Depth: 3.4–3.8 m



### **SY60**

Operating Weight: 5.9–6.2 t

Engine Power: 40–45 kW (54–60 HP)

Maximum Digging Depth: 3.7–4.0 m



## SY75

Operating Weight: 7.0–7.8 t

Engine Power: 40–45 kW (54–60 HP)

Maximum Digging Depth: 3.8–4.5 m



## SY95

Operating Weight: 9.0–9.5 t

Engine Power: 49–54 kW (66–72 HP)

Maximum Digging Depth: 4.2–4.4 m

## SY135

Operating Weight: 13.5–14.9 t

Engine Power: 77–78.5 kW (103–105 HP)

Maximum Digging Depth: 5.5–6.0 m





### SY155

Operating Weight: 14–16 t

Engine Power: 77–84 kW (103–113 HP)

Maximum Digging Depth: 5.4–6.0 m

### SY195

Operating Weight: 14–16 t

Engine Power: 77–84 kW (103–113 HP)

Maximum Digging Depth: 5.4–6.0 m



### SY205

Operating Weight: 20–21.5 t

Engine Power: 114–118 kW (153–158 HP)

Maximum Digging Depth: 6.5–6.6 m

## SY215

Operating Weight: 21.5–24.2 t

Engine Power: 114–122 kW (153–164 HP)

Maximum Digging Depth: 6.3–6.6 m



## SY225

Operating Weight: 22–25 t

Engine Power: 118–122 kW (158–164 HP)

Maximum Digging Depth: 6.0–6.6 m

## SY235

Operating Weight: 24.0–25.3 t

Engine Power: 122–145 kW (164–195 HP)

Maximum Digging Depth: 6.4–6.8 m





### SY245

Operating Weight: 24.0–25.3 t  
 Engine Power: 122–145 kW (164–195 HP)  
 Maximum Digging Depth: 6.4–6.8 m

### SY265

Operating Weight: 27–31.5 t  
 Engine Power: 142–145 kW (190–194 HP)  
 Maximum Digging Depth: 6.7–13.3 m



### SY335

Operating Weight: 32.5–35.5 t  
 Engine Power: 190–212 kW (255–284 HP)  
 Maximum Digging Depth: 6.5–7.5 m



### SY365

Operating Weight: 36.2–36.7 t

Engine Power: 205 kW (275 HP)

Maximum Digging Depth: 7.29–7.34 m



### SY375

Operating Weight: 37–38 t

Engine Power: 200–212 kW (268–284 HP)

Maximum Digging Depth: 7.0–7.3 m



### SY415

Operating Weight: 40–42 t

Engine Power: 250–272 kW (335–365 HP)

Maximum Digging Depth: 7.0–7.1 m

## SY465

Operating Weight: 45.5–46 t

Engine Power: 235–250 kW (315–335 HP)

Maximum Digging Depth: 7.28–7.30 m



## SY500

Operating Weight: 49.5–54.5 t

Engine Power: 298–300 kW (400–402 HP)

Maximum Digging Depth: 7.49–7.71 m

## SY550

Operating Weight: 49.5–54.5 t

Engine Power: 298–300 kW (400–402 HP)

Maximum Digging Depth: 7.49–7.71 m





### Mini Excavators 301.5

---

Operating Weight: 1775 kg

Maximum Digging Depth: 2.54 m

Engine Power: 14.3 kW

### Mini Excavators 301.7 CR

---

Operating Weight: 1915 kg

Maximum Digging Depth: 2.54 m

Engine Power: 14.3 kW



### Mini Excavators 303 CR

---

Operating Weight: 3547 kg

Maximum Digging Depth: 2.95 m

Engine Power: 17.6 kW

### Mini Excavators 303.5 CR

Operating Weight: 4192 kg

Maximum Digging Depth: 3.11 m

Engine Power: 17.6 kW



### Mini Excavators 307.5

Operating Weight: 8120 kg

Maximum Digging Depth: 4.64 m

Engine Power: 40.4 kW



### Mini Excavators 308 CR

Operating Weight: 8389 kg

Maximum Digging Depth: 4.64 m

Engine Power: 51.8 kW





### CAT 313 GC

---

Operating Weight: 13789 kg

Engine Power: 54.4 kW

Maximum Digging Depth: 6.04 m

### CAT 315 GC

---

Operating Weight: 15422 kg

Engine Power: 73.1 kW

Maximum Digging Depth: 6.00 m



### CAT M315 GC

---

Operating Weight: 15600 kg

Engine Power: 69.4 kW

Maximum Travel Speed: 37 km/h



### CAT 317 GC

Operating Weight: 17237 kg  
Engine Power: 88.7 kW  
Maximum Digging Depth: 6.40 m



### CAT 320

Operating Weight: 22589 kg  
Engine Power: 128.3 kW  
Maximum Digging Depth: 6.71 m

### CAT 323

Operating Weight: 24993 kg  
Engine Power: 128.3 kW  
Maximum Digging Depth: 6.73 m





### CAT 325

Operating Weight: 28399 kg

Engine Power: 128.3 kW

Maximum Digging Depth: 6.71 m

### CAT 326

Operating Weight: 25583 kg

Engine Power: 149.9 kW

Maximum Digging Depth: 6.83 m



### CAT 330

Operating Weight: 31389 kg

Engine Power: 203.6 kW

Maximum Digging Depth: 7.29 m

### CAT 340

Operating Weight: 37694 kg

Engine Power: 258.0 kW

Maximum Digging Depth: 8.20 m



### CAT 350

Operating Weight: 47677 kg  
Engine Power: 308.0 kW  
Maximum Digging Depth: 7.96 m



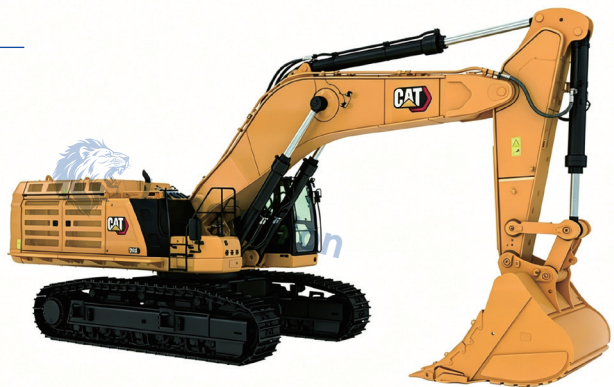
### CAT 374

Operating Weight: 73910 kg  
Engine Power: 361.0 kW  
Maximum Digging Depth: 8.56 m



### CAT 395

Operating Weight: 94061 kg  
Engine Power: 404.0 kW  
Maximum Digging Depth: 9.72 m





### KOMATSU PC18MR-5

Operating Weight: 1865 kg  
 Engine Power: 11.2 kW (15.8 HP)  
 Maximum Digging Depth: 2610 mm

### KOMATSU PC20MR-3

Operating Weight 2,160 kg (4,762 lb)  
 Engine Power 15.50 kW (20.8 hp)  
 Bucket Capacity 19.30 L (5.1 gal)



### KOMATSU PC30MR-3

Operating weight (lbs) 6,922-7,496  
 Engine Power(HP) 29.5  
 Maximum Digging Depth: 2.67 m

## KOMATSU PC35MR

Operating Weight: 3.35~3.87 t

Engine Power: 21.4kW (29 HP)

Maximum Digging Depth: 3.11~3.45m



## KOMATSU PC45MR

Operating Weight: 4.55~4.99 t

Engine Power: 28.3kW (38.5 HP)

Maximum Digging Depth: 3.70m

## KOMATSU PC55MR

Operating Weight: 5.15~5.26 t

Engine Power: 28.3~29.1 kW (38~39 HP)

Maximum Digging Depth: 3.80~4.13 m





### KOMATSU PC56

---

Operating Weight: 5300 kg

Engine Power: 34.5 kW (47 HP)

Maximum Digging Depth: 3810 mm

### KOMATSU PC70

---

Operating Weight: 6500 kg (-8) / 6600 kg (-11M0)

Engine Power: 36.0 kW (49 HP)

Maximum Digging Depth: 4100 mm



### KOMATSU PC78US

---

Operating Weight: 6,945–8,250 kg

Engine Power: 51 kW (68 HP)

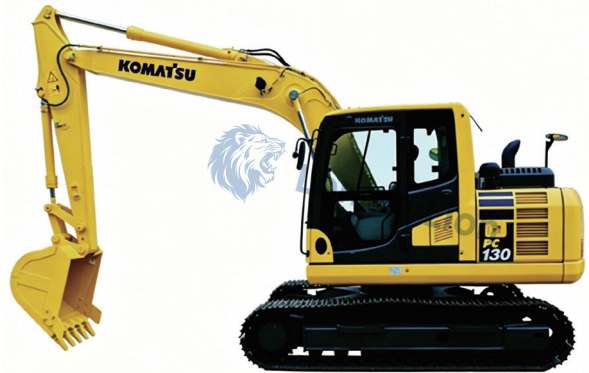
Maximum Digging Depth: approx. 4,100 mm

## KOMATSU PC130

Operating Weight: 12,500 kg

Engine Power: 69.6~72.6 kW (94~98 HP)

Maximum Digging Depth: approx. 5,520 mm



## KOMATSU PC160LC

Operating Weight: 16,500 – 17,140 kg

Engine Power: 90 kW (122 HP)

Maximum Digging Depth: 5,960 mm

## KOMATSU PC200

Operating Weight: 20500 kg

Engine Power: 123.2 kW (168 HP)

Maximum Digging Depth: 6620 mm





### **KOMATSU PC210LC**

---

Operating Weight: 21,200 - 22,300 kg

Engine Power: 103 kW (140 HP)

Maximum Digging Depth: 6,620 mm

### **KOMATSU PC240LC**

---

Operating Weight: 25,100 - 25,700 kg

Engine Power: 123 kW (167 HP)

Maximum Digging Depth: 6,920 mm



### **KOMATSU PC270**

---

Operating Weight: 27,460 - 28,300 kg

Engine Power: 134 kW (182 HP)

Maximum Digging Depth: 6,460 - 6,940 mm

## KOMATSU PC300

Operating Weight: 31,200 - 32,800 kg  
Engine Power: 187 kW (254 HP)  
Maximum Digging Depth: approx. 7,380 mm



## KOMATSU PC350

Operating Weight: 33.6 t  
Engine Power: 187 kW (254 HP)  
Maximum Digging Depth: 7380 mm



## KOMATSU PC360

Operating Weight: 34,460 kg (34.5 t)  
Engine Power: 202.3 kW (275 HP)  
Maximum Digging Depth: approx. 7,420 mm





### **KOMATSU PC400**

---

Operating Weight: 42.1 t

Engine Power: 257 kW (350 HP)

Maximum Digging Depth: 7790 mm

### **KOMATSU PC450**

---

Operating Weight: 45.1 t

Engine Power: 257 kW (350 HP)

Maximum Digging Depth: 7790 mm



### **KOMATSU PC490LC**

---

Operating Weight: 46.91 t

Engine Power: 270 kW (362 HP)

Maximum Digging Depth: 6780 mm



## KOMATSU PC500LC

Operating Weight: 49.8 t  
 Engine Power: 269 kW (366 HP)  
 Maximum Digging Depth: 7695 mm



## KOMATSU PC600

Operating Weight: 60200 kg  
 Engine Power: 323 kW (433 HP)  
 Maximum Digging Depth: 7690 mm

## KOMATSU PC800

Operating Weight: 74,500 - 79,900 kg  
 Engine Power: 370 kW (496 HP)  
 Maximum Digging Depth: 8,600 mm



## KOMATSU PC850

Operating Weight: 78,300 - 79,500 kg  
 Engine Power: 363 kW (494 HP)  
 Maximum Digging Depth: 7,130 mm





**Lonely Lion**