



Lonely Lion

# Semi Trailer Parts



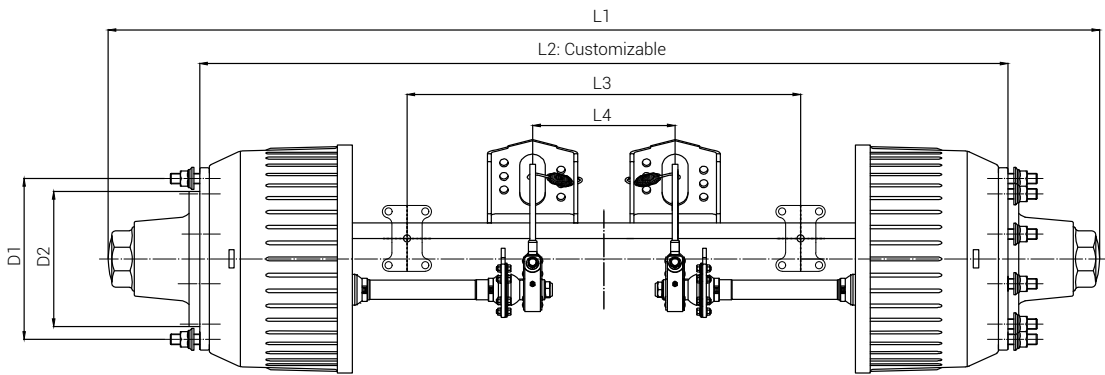


# CONTENTS

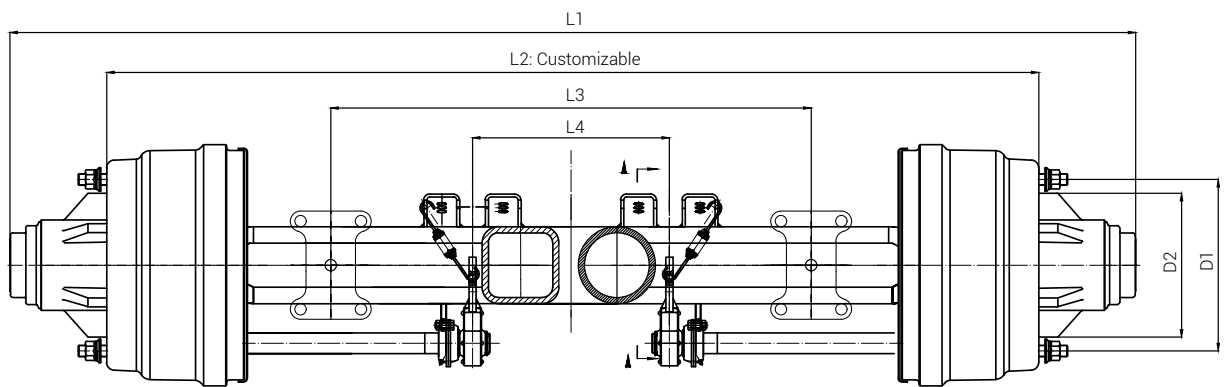
Trailer Axle .....	1
Trailer Suspensions.....	4
Landing Legs .....	15
Fifth Wheel Catalogue .....	19
King Pin .....	20
Leaf Spring .....	22
Lion Wheels .....	29
Twist Locks .....	34



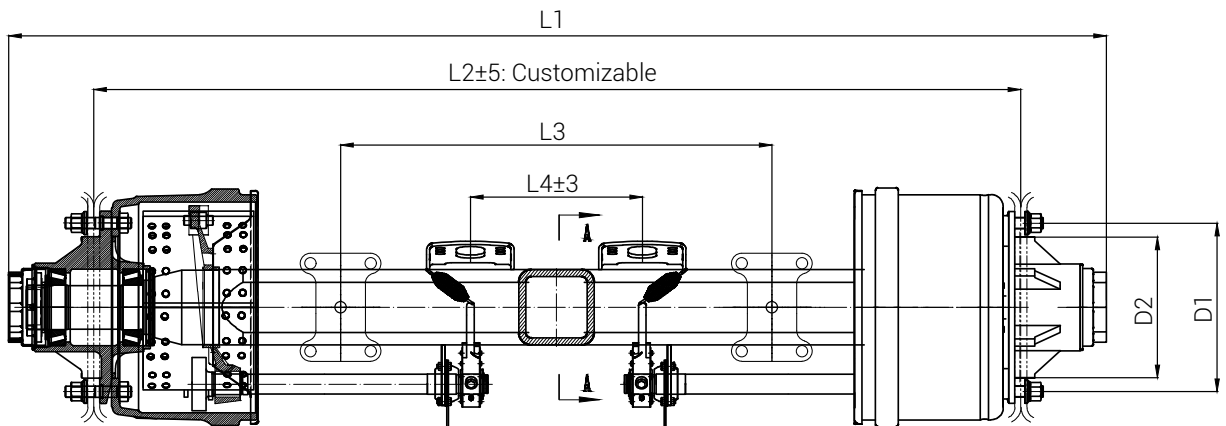




Axle Model	Max Capacity	Axle Tube	Brake Type	L1 (Total Length)	L2 (Track)	L3 (Center Distance of Spring Seat)	L4 (GM Center Distance of Brake Chambers)	Bearing		Wheel Fixing			Recommended Wheels
								outer	inner	Studs	D1 P.C.D.	D2 Hole Diameter	
LL/12T/G/001	12	150×150×12	Φ420×180	2172	1840	≥ 940	425	33213		10-M22×1.5 ISO	335	281	7.5v-20
LL/13T/G/001	13	150×150×12	Φ420×200	2172	1840	≥ 940	360		33118	10-M22×1.5 ISO	335	281	7.5v-20
LL/14T/G/001	14	150×150×14	Φ420×200	2222	1850	≥ 950	370	33215	32219	10-M22×1.5 ISO	335	281	8.00v-20
LL/16T/G/001	16	150×150×16	Φ420×200	2293	1850	≥ 950	360	32314	32222	10-M22×1.5 ISO	335	281	8.50v-20
LL/18T/G/001	18	150×150×18	Φ420×220	2293	1850	≥ 950	370	32314	32222	10-M22×1.5 ISO	335	281	8.50v-20
LL/20T/G/001	20	150×150×20	Φ420×220	2293	1850	≥ 950	370	32314	32222	10-M22×1.5 ISO	335	281	8.50v-20



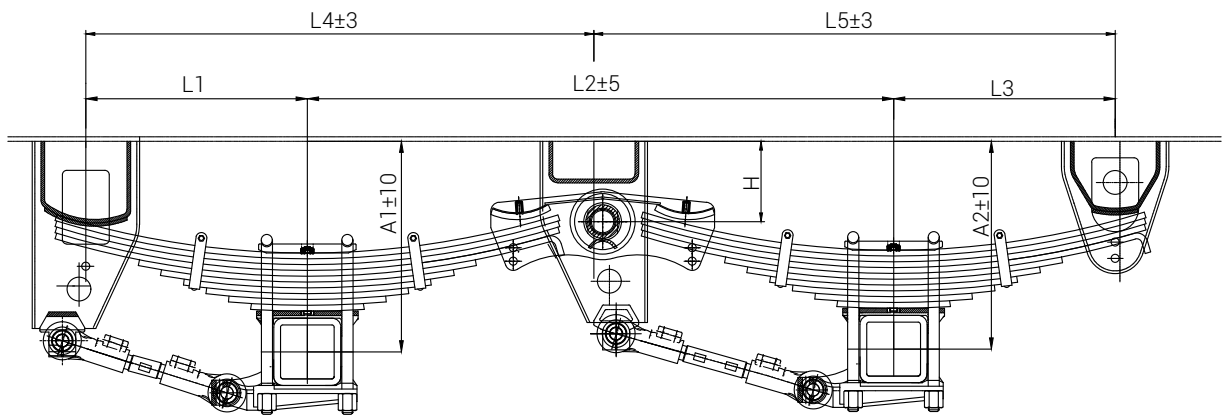
Axle Model	Max Capacity	Axle Tube	Brake Type	L1 (Total Length)	L2 (Track)	L3 (Center Distance of Spring Seat)	L4 (GM Center Distance of Brake Chambers)	Bearing		Wheel Fixing			Recommended Wheels
								outer	inner	Studs	D1 P.C.D.	D2 Hole Diameter	
LL/13T/A/O/001	13	150x150x12	Φ420x180	2185	1840	≥ 930	390	518445/10	518445/10	10-M22x1.5 ISO	335	281	7.5v-20
LL/13T/A/O/002	13	150x150x12	Φ420x180	2185	1840	≥ 930	390	518445/10	518445/10	10-M22x1.5 ISO	285.75	221	7.5v-20
LL/13T/A/O/003	13	150x150x12	Φ420x180	2185	1840	≥ 930	390	518445/10	518445/10	8-M20x1.5 JAP	285	221	7.5v-20
LL/13T/A/O/004	13	150x150x12	Φ420x180	2185	1840	≥ 930	390	518445/10	518445/10	10x7/8"-11 BSF	335	281	7.5v-20
LL/13T/A/O/005	13	150x150x12	Φ420x220	2185	1840	≥ 930	350	518445/10	518445/10	8-M30x2 ISO	285.75	221	7.5v-20
LL/13T/A/O/006	13	150x150x12	Φ420x220	2185	1840	≥ 930	350	518445/10	518445/10	10-M22x1.5 ISO	335	281	7.5v-20
LL/15T/A/O/001	15	150x150x14	Φ420x180	2205	1850	≥ 940	400	518445/10	220149/10	10-M22x1.5 ISO	335	281	8.0v-20
LL/16T/A/O/001	16	150x150x14	Φ420x220	2205	1850	≥ 940	360	518445/10	220149/10	10-M22x1.5 ISO	335	281	8.0v-20



Axle Model	Max Capacity	Axle Tube	Brake Type	L1 (Total Length)	L2 (Track)	L3 (Center Distance of Spring Seat)	L4 (GM Center Distance of Brake Chambers)	Bearing		Wheel Fixing			Recommended Wheels
								outer	inner	Studs	D1 P.C.D.	D2 Hole Diameter	
LL/13T/A/I/001	13	150×150×12	Φ420×180	2185	1840	≥ 930	390	518445/10	518445/10	10-M22×1.5 ISO	335	221	7.5v-20
LL/13T/A/I/002	13	150×150×12	Φ420×180	2185	1840	≥ 930	390	518445/10	518445/10	10-M22×1.5 ISO	285.75	221	7.5v-20
LL/13T/A/I/003	13	150×150×12	Φ420×180	2185	1840	≥ 930	390	518445/10	518445/10	8-M20×1.5 ISO	285	221	7.5v-20
LL/13T/A/I/004	13	150×150×12	Φ420×220	2185	1840	≥ 930	350	518445/10	518445/10	8-M30×2 ISO	285.75	221	7.5v-20
LL/13T/A/I/005	13	150×150×12	Φ420×220	2185	1840	≥ 930	350	518445/10	518445/10	10-M22×1.5 ISO	335	281	7.5v-20
LL/15T/A/I/001	15	150×150×14	Φ420×180	2185	1850	≥ 940	394	518445/10	220149/10	10-M22×1.5 ISO	335	281	8.0v-20
LL/16T/A/I/001	16	150×150×14	Φ420×220	2185	1850	≥ 940	354	518445/10	32222/10	10-M22×1.5 ISO	335	281	8.0v-20
LL/20T/A/I/001	20	150×150×16	Φ420×220	2185	1850	≥ 940	355	518445/10	32222/10	10-M24×1.5 ISO	335	281	8.0v-20



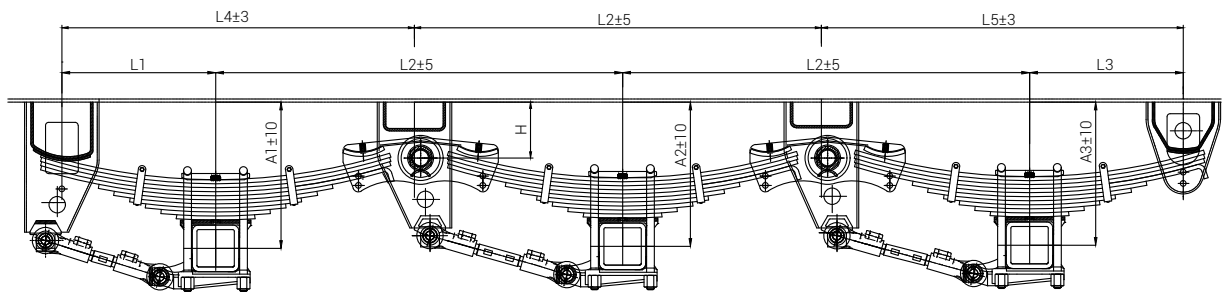
## American Type Tandem Axle Overslung Suspension



Model	A1 (mm)	A2 (mm)	L1 (mm)	L2 (mm)	L3 (mm)	L4 (mm)	L5 (mm)	H (mm)	Axle load (kg)
LL/TS/A/2/O/001	415	406	490	1310	490	1135	1155	130	13000*2
LL/TS/A/2/O/002	435	426	490	1310	490	1135	1155	150	13000*2
LL/TS/A/2/O/003	465	456	490	1310	490	1135	1155	180	13000*2
LL/TS/A/2/O/004	495	486	490	1310	490	1135	1155	210	13000*2
LL/TS/A/2/O/005	515	506	490	1310	490	1135	1155	230	13000*2
LL/TS/A/2/O/006	535	526	490	1310	490	1135	1155	250	13000*2
LL/TS/A/2/O/007	555	546	490	1310	490	1135	1155	270	13000*2
LL/TS/A/2/O/008	585	576	490	1310	490	1135	1155	300	13000*2
LL/TS/A/2/O/009	605	596	490	1310	490	1135	1155	320	13000*2



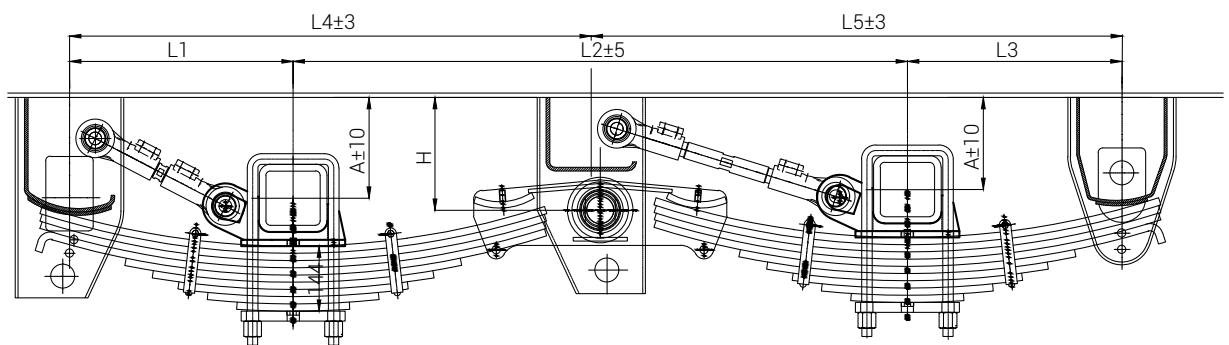
## American Type Triple Axle Overslung Suspension



Model	A1 (mm)	A2 (mm)	A3 (mm)	L1 (mm)	L2 (mm)	L3 (mm)	L4 (mm)	L5 (mm)	H (mm)	Axle load (kg)
LL/TS/A/3/O/001	415	406	397	490	1310	490	1135	1155	130	13000*3
LL/TS/A/3/O/002	435	426	417	490	1310	490	1135	1155	150	13000*3
LL/TS/A/3/O/003	465	456	447	490	1310	490	1135	1155	180	13000*3
LL/TS/A/3/O/004	495	486	477	490	1310	490	1135	1155	210	13000*3
LL/TS/A/3/O/005	515	506	497	490	1310	490	1135	1155	230	13000*3
LL/TS/A/3/O/006	535	526	517	490	1310	490	1135	1155	250	13000*3
LL/TS/A/3/O/007	555	546	537	490	1310	490	1135	1155	270	13000*3
LL/TS/A/3/O/008	585	576	567	490	1310	490	1135	1155	300	13000*3
LL/TS/A/3/O/009	605	596	587	490	1310	490	1135	1155	320	13000*3



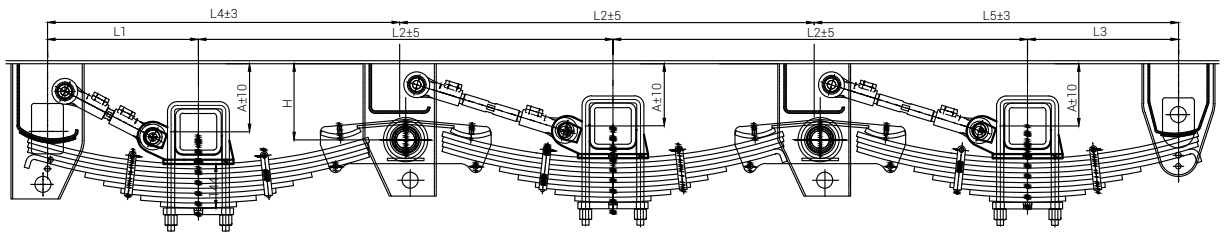
## American Type Tandem Axle Underslung Suspension



Model	A (mm)	L1 (mm)	L2 (mm)	L3 (mm)	L4 (mm)	L5 (mm)	H (mm)	Axle load (kg)
LL/TS/A/2/U/001	180	490	1310	490	1130	1160	235	16000*2
LL/TS/A/2/U/002	200	490	1310	490	1130	1160	255	16000*2
LL/TS/A/2/U/003	220	490	1310	490	1130	1160	275	16000*2
LL/TS/A/2/U/004	250	490	1310	490	1130	1160	305	16000*2
LL/TS/A/2/U/005	270	490	1310	490	1130	1160	325	16000*2



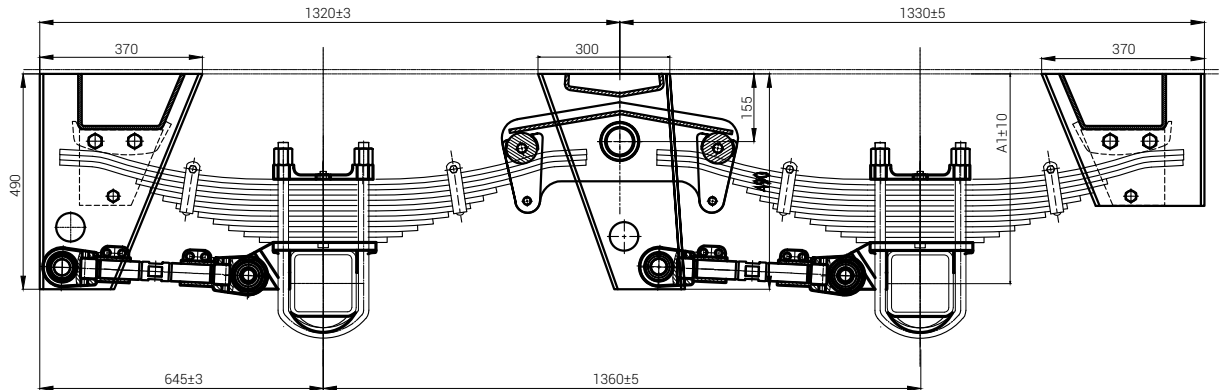
## American Type Triple Axle Underslung Suspension



Model	A (mm)	L1 (mm)	L2 (mm)	L3 (mm)	L4 (mm)	L5 (mm)	H (mm)	Axle load (kg)
LL/TS/A/3/U/001	180	490	1310	490	1130	1160	235	16000*3
LL/TS/A/3/U/002	200	490	1310	490	1130	1160	255	16000*3
LL/TS/A/3/U/003	220	490	1310	490	1130	1160	275	16000*3
LL/TS/A/3/U/004	250	490	1310	490	1130	1160	305	16000*3
LL/TS/A/3/U/005	270	490	1310	490	1130	1160	325	16000*3



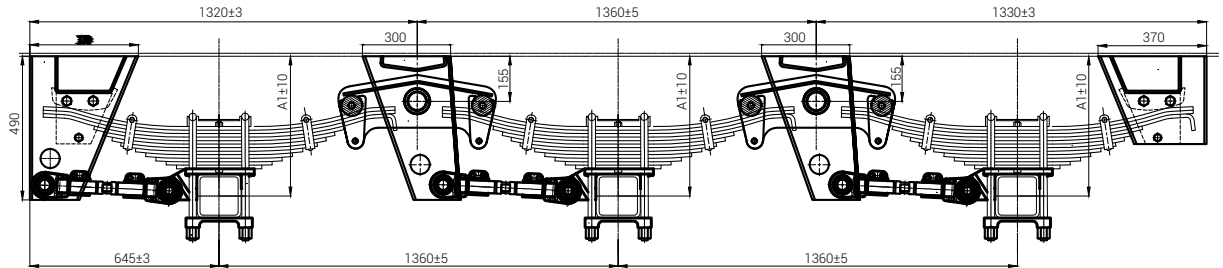
## German Type Tandem Axle Suspension for SAF



Model	Thickness (mm)	No. of Leaf Springs	Thickness of Leaf Springs (mm)	A1 (mm)	Axle Load
LL/TS/G/2/O/SAF001	8	12	12	490	14000*2



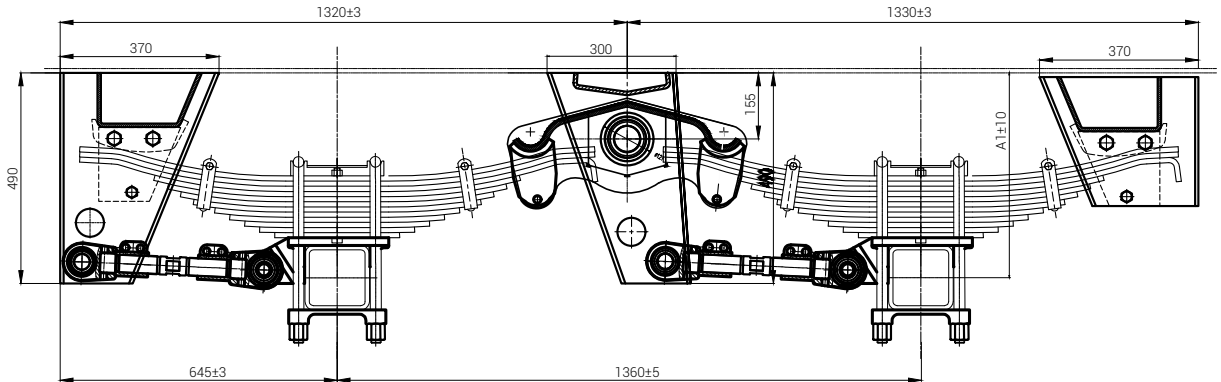
## German Type Triple Axle Suspension for SAF



Model	Thickness (mm)	No. of Leaf Springs	Thickness of Leaf Springs (mm)	A1 (mm)	Axle Load
LL/TS/G/3/O/SAF001	8	12	12	490	14000±3



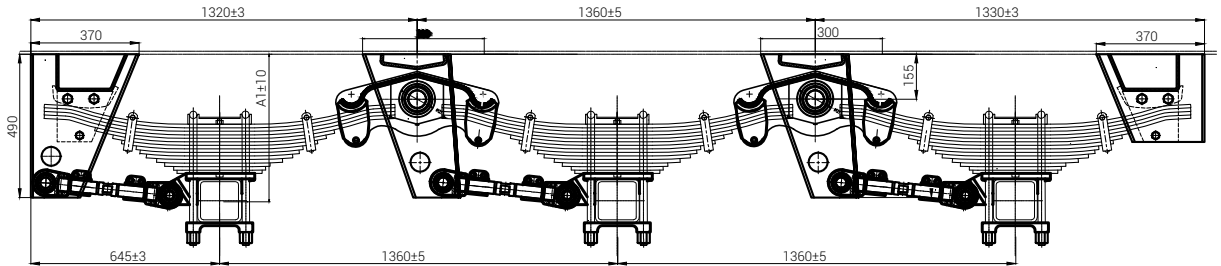
## German Type Tandem Axle Suspension for BPW



Model	Thickness (mm)	No. of Leaf Springs	Thickness of Leaf Springs (mm)	A1 (mm)	Axle Load
LL/TS/G/2/O/BPW001	10	12	12	490	16000*2



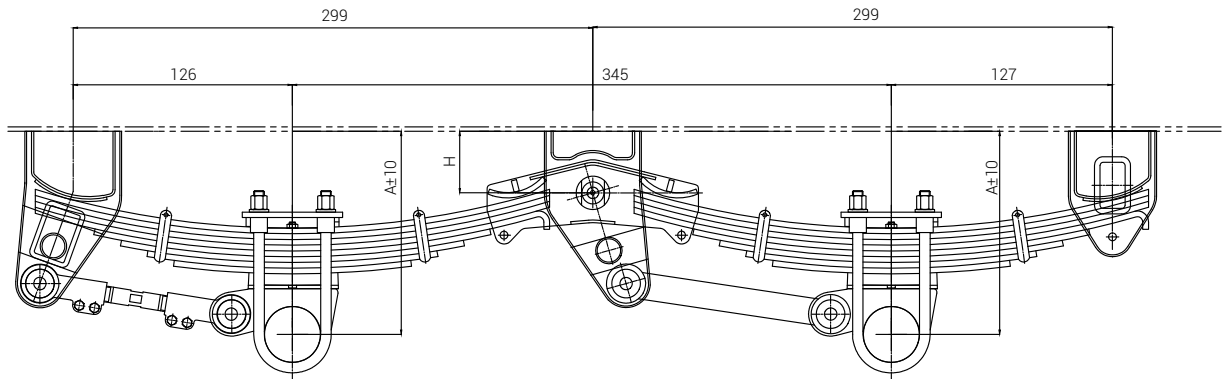
## German Type Suspension for BPW



Model	Thickness (mm)	No. of Leaf Springs	Thickness of Leaf Springs (mm)	A1 (mm)	Axle Load
LL/TS/G/3/0/BPW001	10	12	12	490	16000*3



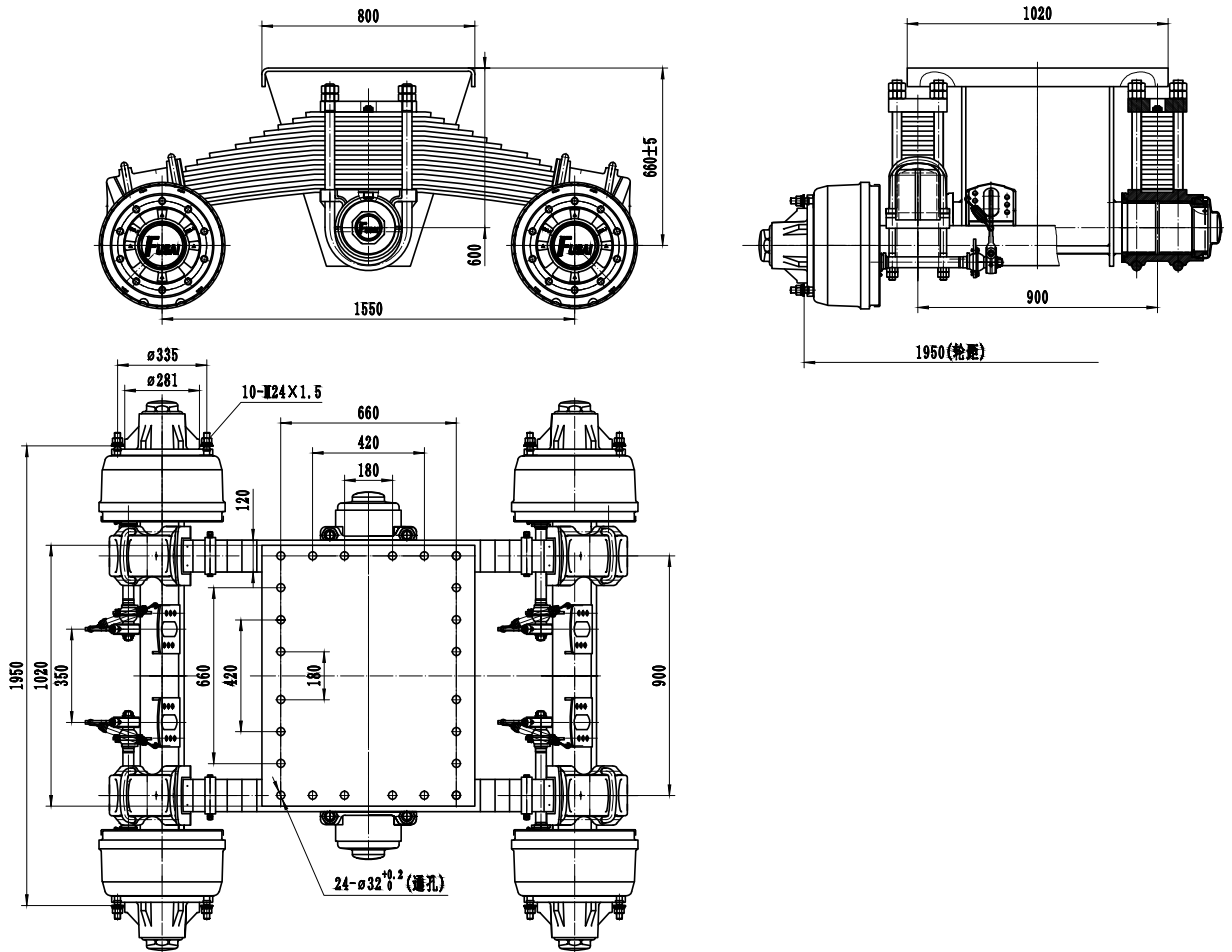
## American 68-type Tandem Axle Suspension



Model	A1 (mm)	L1 (mm)	L2 (mm)	L3 (mm)	L4 (mm)	L5 (mm)	H (mm)	Axle load (kg)
LL/TS/A/68/2/0/001	440	483	1310	483	1138	1138	130	11000*2
LL/TS/A/68/2/0/002	460	483	1310	483	1138	1138	150	11000*2
LL/TS/A/68/2/0/003	490	483	1310	483	1138	1138	180	11000*2
LL/TS/A/68/2/0/004	520	483	1310	483	1138	1138	210	11000*2
LL/TS/A/68/2/0/005	540	483	1310	483	1138	1138	230	11000*2



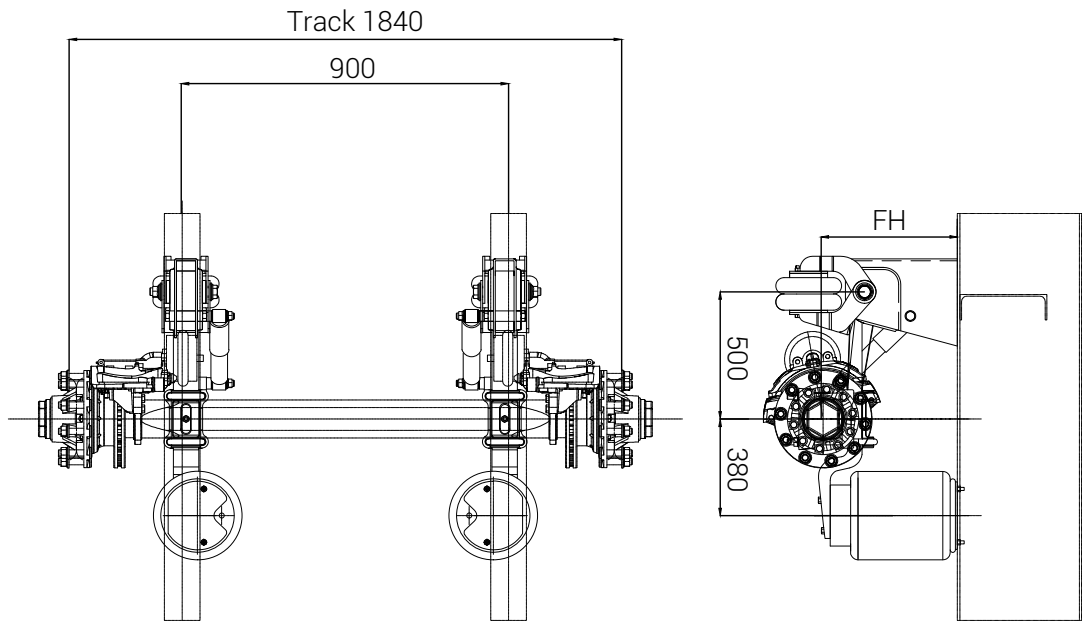
## Bogie Suspensions



Model	Rated Load (kg)	Leaf Spring Type	Brake (mm)	Bearing	Leaf Spring Center Distance L3	Axle Trake (mm)	Trake	Wheel Fixing			Axle Weight (kg)
								Stud	P.C.D (mm)	H (mm)	
LL/TS/B/001	24000	90*80	420*180	33118 33213	900	1400	1840	10*,22*1.5ISO	335	280.8	1900
LL/TS/B/002	28000	120*17	420*200	32219 33215	900	1550	1840	10*,22*1.5ISO	335	280.8	2348
LL/TS/B/003	32000	120*17	420*200	32222 33214	900	1550	1850	10*,22*1.5ISO	335	280.8	2404



## Air Suspension



Model	The installation height	Track (mm)	Spring Seat Installation	Airbag	Steel ring	Tire model
				specification	type	
LL/TS/A/001	210-310	1840	900	350	6.5-15	8.25R20
LL/TS/A/002	210-310	1840	900	350	6.5-15	8.25R20
LL/TS/A/003	210-310	1840	900	350	6.5-15	8.25R20
LL/TS/A/004	210-310	1840	900	350	7.5V-20	10.00R20
LL/TS/A/005	210-310	1840	900	350	7.5V-20	10.00R20



Model	Static Load Capacity (ton per pair)	Lifting Capacity (ton per pair)	Ratio Gear (mm/r)	Travel Max (mm)	Standard Weight (Kg per single)
LL/LG/2T/001	3	2	2.25	706	12

Model	Static Load Capacity (ton per pair)	Lifting Capacity (ton per pair)	Ratio Gear (mm/r)	Travel Max (mm)	Standard Weight (Kg per single)
LL/LG/5T/001	8	5	2.86	650	18

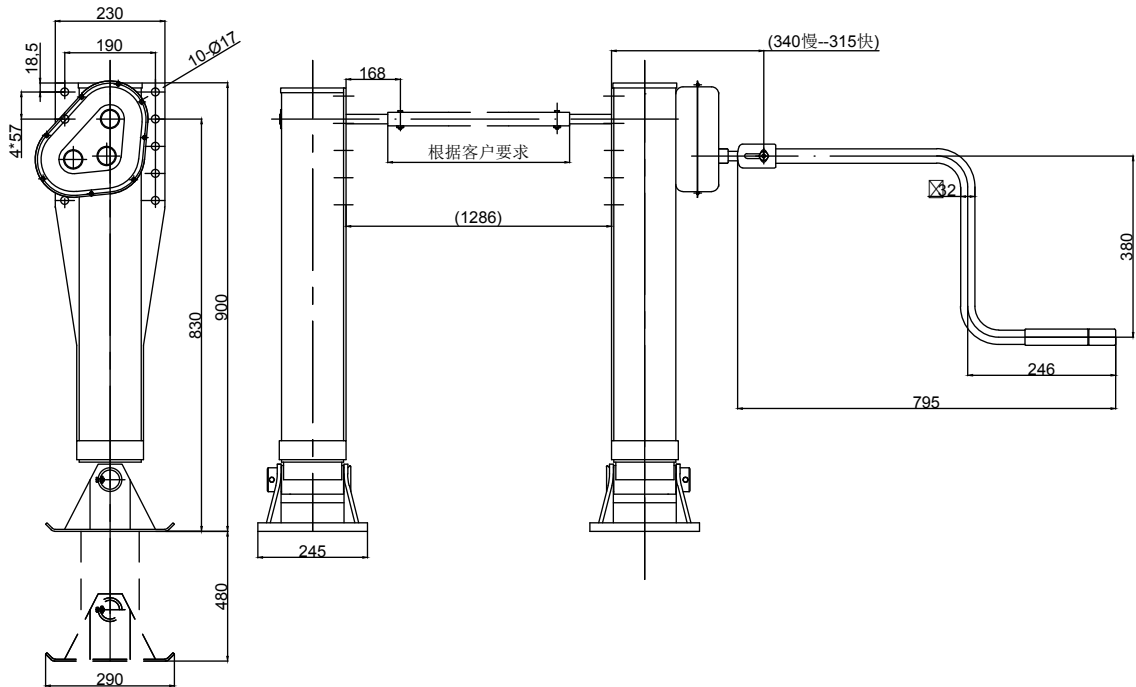
Model	Static Load Capacity (ton per pair)	Lifting Capacity (ton per pair)	Ratio Gear (mm/r)	Travel Max (mm)	Standard Weight (Kg per single)
LL/LG/5T/001	8	5	2.86	650	18

Model	Static Load Capacity (ton per pair)	Lifting Capacity (ton per pair)	High Gear (mm/r)	Low Gear (mm/r)	Travel Max (mm)	Assembly Height (mm)	Standard Weight (kg per pair)	Crank Force (kg)
LL/LG/22T/001	60	22	6	0.79	430	790	88	20
LL/LG/28T/001	80	28	5.42	0.72	480	852	106	25

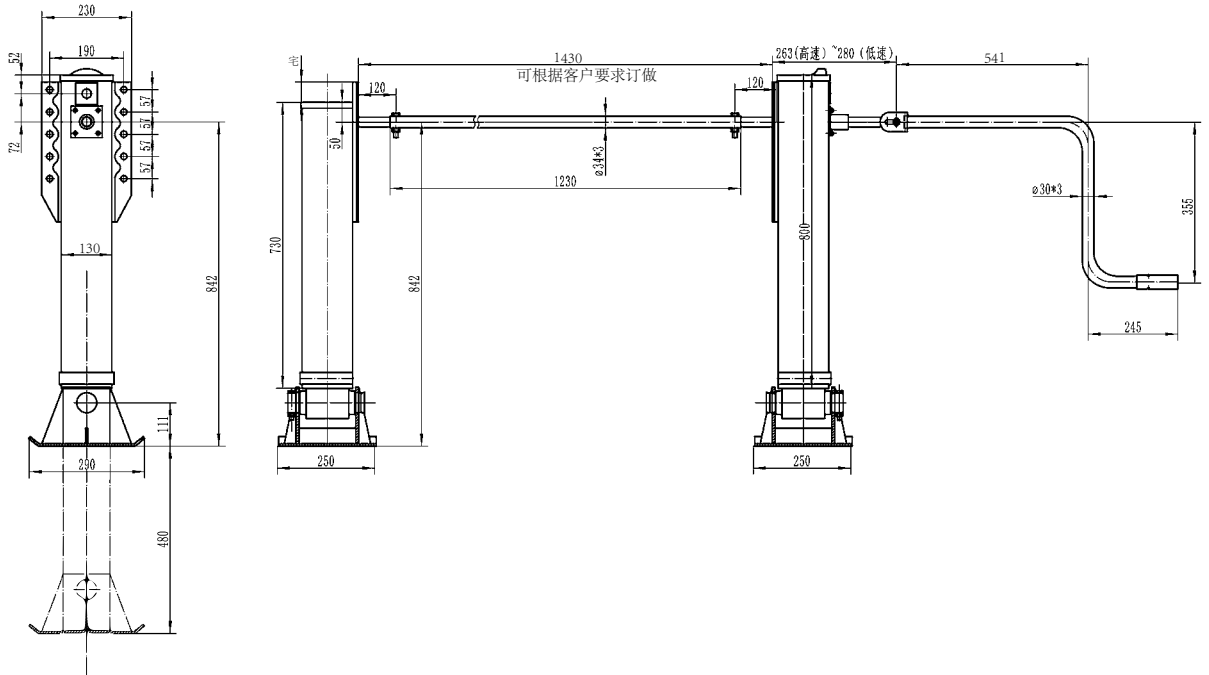
Model	Static Load Capacity (ton per pair)	Lifting Capacity (ton per pair)	High Gear (mm/r)	Low Gear (mm/r)	Travel Max (mm)	Assembly Height (mm)	Standard Weight (kg per pair)	Crank Force (kg)
LL/LG/28T/002	80	28	8.92	1	480	867	106	35

Model	Static Load Capacity (ton per pair)	Lifting Capacity (ton per pair)	High Gear (mm/r)	Low Gear (mm/r)	Travel Max (mm)	Assembly Height (mm)	Standard Weight (kg per pair)	Crank Force (kg)
LL/LG/28T/003	80	28	11.25	1	480	850	112	35

Model	Static Load Capacity (ton per pair)	Lifting Capacity (ton per pair)	High Gear (mm/r)	Low Gear (mm/r)	Travel Max (mm)	Assembly Height (mm)	Standard Weight (kg per pair)	Crank Force (kg)
LL/LG/28T/004	80	28	11.25	1	480	850	110	35



Model	Static Load Capacity (ton per pair)	Lifting Capacity (ton per pair)	High Gear (mm/r)	Low Gear (mm/r)	Travel Max (mm)	Assembly Height (mm)	Standard Weight (kg per pair)	Crank Force (kg)
LL/LG/25T/001	80	25	4.33	0.57	355	715	90	20
LL/LG/25T/002	80	25	4.33	0.57	430	790	96	20
LL/LG/25T/003	80	25	4.33	0.57	480	840	100	20
LL/LG/28T/005	80	28	5.42	0.72	355	715	90	25
LL/LG/28T/006	80	28	5.42	0.72	430	790	96	25
LL/LG/28T/007	80	28	5.42	0.72	480	840	100	25
LL/LG/35T/001	80	35	5.42	0.72	355	715	101	31
LL/LG/35T/002	80	35	5.42	0.72	430	790	107	31
LL/LG/35T/003	80	35	5.42	0.72	480	840	111	31



Model	Static Load Capacity (ton per pair)	Lifting Capacity (ton per pair)	High Gear (mm/r)	Low Gear (mm/r)	Travel Max (mm)	Assembly Height (mm)	Standard Weight (kg per pair)	Crank Force (kg)
LL/LG/25T/004	80/60	25	6	0.67	335	715	86	22
LL/LG/25T/005	80/60	25	6	0.67	430	790	92	22
LL/LG/25T/006	80/60	25	6	0.67	480	840	96	22
LL/LG/28T/008	80/60	28	7.5	0.83	335	715	86	29
LL/LG/28T/009	80/60	28	7.5	0.83	430	790	92	29
LL/LG/28T/010	80/60	28	7.5	0.83	480	840	96	29
LL/LG/30T/001	80	30	7.5	0.71	355	715	94	30
LL/LG/30T/002	80	30	7.5	0.71	430	790	100	30
LL/LG/30T/003	80	30	7.5	0.71	480	840	104	30



Model	Static Load Capacity (ton per pair)	Lifting Capacity (ton per pair)	High Gear (mm/r)	Low Gear (mm/r)	Travel Max (mm)	Assembly Height (mm)	Standard Weight (kg per pair)	Crank Force (kg)
LL/LG/24T/001	50	24	6	0.79	480	833	88	22

Model	Static Load Capacity (ton per pair)	Lifting Capacity (ton per pair)	High Gear (mm/r)	Low Gear (mm/r)	Travel Max (mm)	Assembly Height (mm)	Standard Weight (kg per pair)	Crank Force (kg)
LL/LG/28T/011	80	28	5.42	0.72	480	852	103	25

Model	Static Load Capacity (ton per pair)	Lifting Capacity (ton per pair)	High Gear (mm/r)	Low Gear (mm/r)	Travel Max (mm)	Assembly Height (mm)	Standard Weight (kg per pair)	Crank Force (kg)
LL/LG/28T/011	80	28	5.42	0.72	480	852	103	25

Model	Static Load Capacity (ton per pair)	Lifting Capacity (ton per pair)	High Gear (mm/r)	Low Gear (mm/r)	Travel Max (mm)	Assembly Height (mm)	Standard Weight (kg per pair)	Crank Force (kg)
LL/LG/16T/011	30	16	6	0.79	480	830	89	18

Model	Static Load Capacity (ton per pair)	Lifting Capacity (ton per pair)	High Gear (mm/r)	Low Gear (mm/r)	Travel Max (mm)	Assembly Height (mm)	Standard Weight (kg per pair)	Crank Force (kg)
LL/LG/28T/012	60	28	5.42	0.72	480	845	103	25

Model	Static Load Capacity (ton per pair)	Lifting Capacity (ton per pair)	High Gear (mm/r)	Low Gear (mm/r)	Travel Max (mm)	Assembly Height (mm)	Standard Weight (kg per pair)	Crank Force (kg)
LL/LG/16T/002	30	16	6	1.1	480	818	84	24

Model	Static Load Capacity (ton per pair)	Lifting Capacity (ton per pair)	High Gear (mm/r)	Low Gear (mm/r)	Travel Max (mm)	Assembly Height (mm)	Standard Weight (kg per pair)	Crank Force (kg)
LL/LG/25T/007	60	25	6	0.67	410	696	89	22
LL/LG/25T/008	60	25	6	0.67	480	766	93.5	22

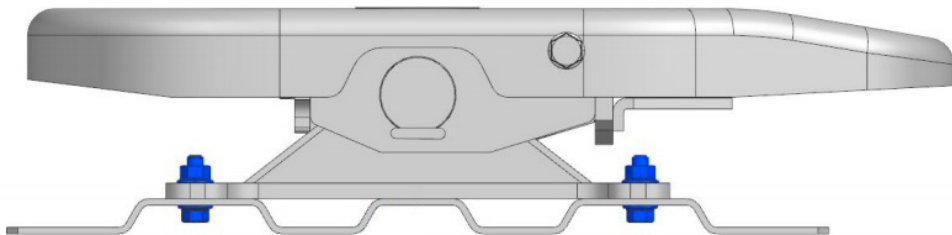
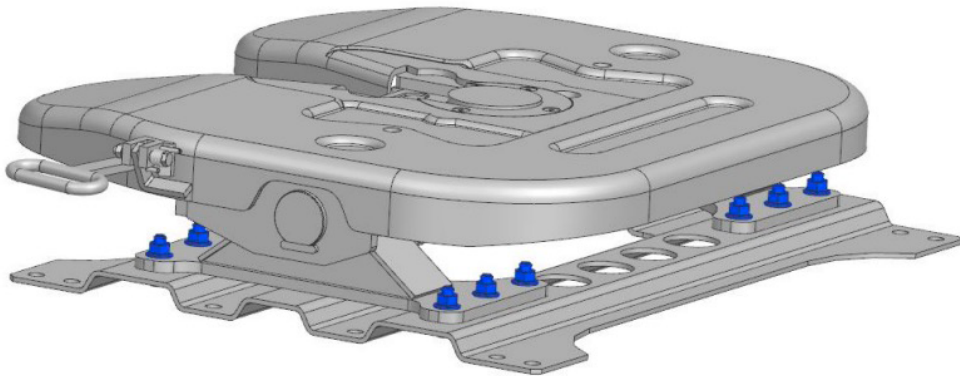
Model	Static Load Capacity (ton per pair)	Lifting Capacity (ton per pair)	High Gear (mm/r)	Low Gear (mm/r)	Travel Max (mm)	Assembly Height (mm)	Standard Weight (kg per pair)	Crank Force (kg)
LL/LG/35T/004	80	35	5.42	0.72	335	736	106	24
LL/LG/35T/005	80	35	5.42	0.72	430	811	112	24
LL/LG/35T/006	80	35	5.42	0.72	480	861	116	24

Model	Static Load Capacity (ton per pair)	Lifting Capacity (ton per pair)	High Gear (mm/r)	Low Gear (mm/r)	Travel Max (mm)	Assembly Height (mm)
LL/LG/28T/E/001	80	28	0.794	0.0882	480	840



## Fifth Wheel Catalogue

---



---

### 50# / 2-inch

Model	Thickness
LL/FW/2/8	8mm
LL/FW/2/10	10mm

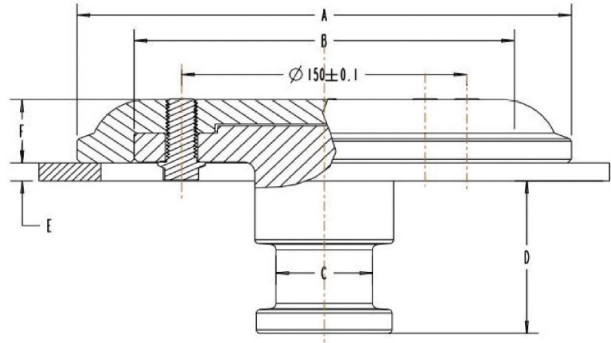
---

### 90# / 3.5-inch

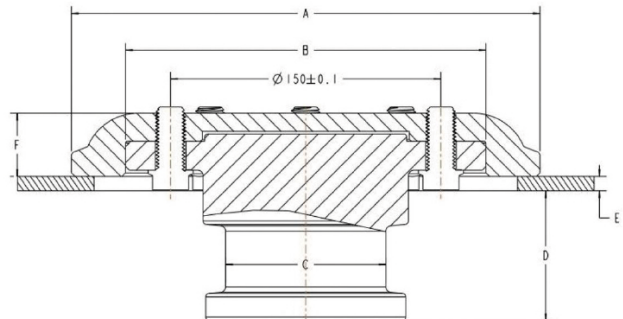
Model	Thickness
LL/FW/3.5/8	8mm
LL/FW/3.5/10	10mm



## Max Semi Trailer Kingpin Catalogue



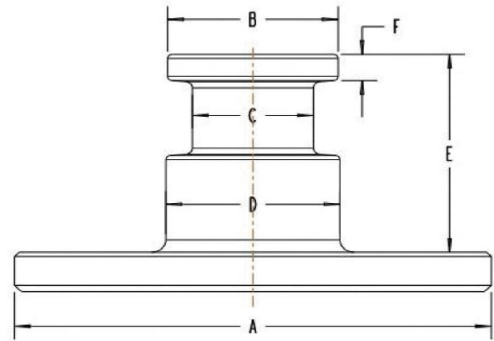
Model	D-Value	A(mm)	B(mm)	C(mm)	D(mm)	E(mm)	F(mm)
LL/KP/2/B/001	162	260	200	50.8	84	8	37
LL/KP/2/B/002	162	260	200	50.8	84	20	35
LL/KP/2/B/003	162	260	200	50.8	84	12	33
LL/KP/2/B/004	162	260	200	50.8	84	14	33
LL/KP/2/B/005	168	260	200	50.8	84	16	35



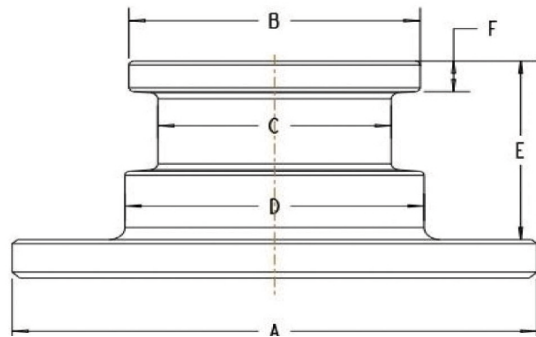
Model	D-Value	A(mm)	B(mm)	C(mm)	D(mm)	E(mm)	F(mm)
LL/KP/35/B/001	162	260	200	89	74	8	37
LL/KP/35/B/002	162	260	200	89	74	10	35
LL/KP/35/B/003	162	260	200	89	74	12	33
LL/KP/35/B/004	162	260	200	89	74	14	33



## Max Semi Trailer Kingpin Catalogue



Model	D-Value	A(mm)	B(mm)	C(mm)	D(mm)	E(mm)	F(mm)	Plate Thickness(mm)
LL/KP/2/W/001	108	200	71.5	50.8	73	92	12.5	8
LL/KP/2/W/002	108	200	71.5	50.8	73	94	12.5	10
LL/KP/2/W/003	108	200	71.5	50.8	73	96	12.5	12



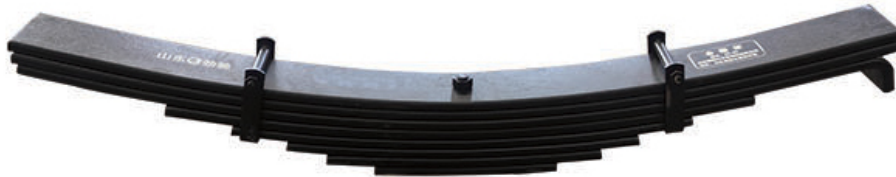
Model	D-Value	A(mm)	B(mm)	C(mm)	D(mm)	E(mm)	F(mm)	Plate Thickness(mm)
LL/KP/35/W/001	210	200	111	89	114	86	15	12
LL/KP/35/W/002	210	200	111	89	114	88	15	14
LL/KP/35/W/003	210	200	111	89	114	90	15	16
LL/KP/35/W/004	210	200	111	89	114	84	15	10
LL/KP/35/W/005	210	200	111	89	114	82	15	8



# Lonely Lion



Model	No of Leaves	Material	Leaf With (mm)	Leaf Thickness (mm)	Leaf Length (Stretched) (mm)	Leaf Length (arched) (mm)	Total Arch Height (mm)	Effective Arch Height (mm)	Design Stress (MPa)	Load Capacity (ton)	Total Load Capacity (ton)	Wheelbase (mm)
LL/LS/001	7	60Si2Mn	90	16	1130	970	88	68	550	6.2	56	1310



Model	No of Leaves	Material	Leaf With (mm)	Leaf Thickness (mm)	Leaf Length (Stretched) (mm)	Leaf Length (arched) (mm)	Total Arch Height (mm)	Effective Arch Height (mm)	Design Stress (MPa)	Load Capacity (ton)	Total Load Capacity (ton)	Wheelbase (mm)
LL/LS/002	8	60Si2Mn	90	16	1130	970	88	68	550	7.1	64	1310



Model	No of Leaves	Material	Leaf With (mm)	Leaf Thickness (mm)	Leaf Length (Stretched) (mm)	Leaf Length (arched) (mm)	Total Arch Height (mm)	Effective Arch Height (mm)	Design Stress (MPa)	Load Capacity (ton)	Total Load Capacity (ton)	Wheelbase (mm)
LL/LS/003	8	60Si2Mn	90	16	1130	970	88	68	550	7.1	64	1310



Model	No of Leafs	Material	Leaf With (mm)	Leaf Thickness (mm)	Leaf Length (Stretched) (mm)	Leaf Length (arched) (mm)	Total Arch Height (mm)	Effective Arch Height (mm)	Design Stress (MPa)	Load Capacity (ton)	Total Load Capacity (ton)	Wheelbase (mm)
LL/LS/004	9	60Si2Mn	90	16	1130	970	88	68	550	8	72	1310



Model	No of Leafs	Material	Leaf With (mm)	Leaf Thickness (mm)	Leaf Length (Stretched) (mm)	Leaf Length (arched) (mm)	Total Arch Height (mm)	Effective Arch Height (mm)	Design Stress (MPa)	Load Capacity (ton)	Total Load Capacity (ton)	Wheelbase (mm)
LL/LS/005	10	60Si2Mn	90	13	1130	970	88	68	550	5.9	53	1310
LL/LS/006	10	60Si2Mn	90	13	1130	970	88	68	550	5.1	46	1310
LL/LS/007	10	60Si2Mn	90	16	1130	970	88	68	550	8.9	80	1310
LL/LS/008	10	60Si2Mn	100	16	1130	970	88	68	550	9.9	89	1310



Model	No of Leafs	Material	Leaf With (mm)	Leaf Thickness (mm)	Leaf Length (Stretched) (mm)	Leaf Length (arched) (mm)	Total Arch Height (mm)	Effective Arch Height (mm)	Design Stress (MPa)	Load Capacity (ton)	Total Load Capacity (ton)	Wheelbase (mm)
LL/LS/009	10	60Si2Mn	90	13	1130	970	88	68	550	5.9	53	1310
LL/LS/010	10	60Si2Mn	90	13	1130	970	88	68	550	5.1	46	1310
LL/LS/011	10	60Si2Mn	90	16	1130	970	88	68	550	8.9	80	1310
LL/LS/012	10	60Si2Mn	120	13	1130	970	88	68	550	7.8	70	1310
LL/LS/013	10	60Si2Mn	120	16	1130	970	88	68	550	11.8	105	1310
LL/LS/014	10	60Si2Mn	90	20	1130	970	88	68	550	13.9	125	1310



Model	No of Leafs	Material	Leaf With (mm)	Leaf Thickness (mm)	Leaf Length (Stretched) (mm)	Leaf Length (arched) (mm)	Total Arch Height (mm)	Effective Arch Height (mm)	Design Stress (MPa)	Load Capacity (ton)	Total Load Capacity (ton)	Wheelbase (mm)
LL/LS/015	12	60Si2Mn	90	16	1130	970	88	68	550	10.7	96	1310
LL/LS/016	12	60Si2Mn	120	13	1130	970	88	68	550	9.4	85	1310
LL/LS/017	12	60Si2Mn	120	16	1130	970	88	68	550	14.2	128	1310



# Lonely Lion



Model	No of Leafs	Material	Leaf With (mm)	Leaf Thickness (mm)	Leaf Length (Stretched) (mm)	Leaf Length (arched) (mm)	Total Arch Height (mm)	Effective Arch Height (mm)	Design Stress (MPa)	Load Capacity (ton)	Total Load Capacity (ton)	Wheelbase (mm)
LL/LS/018	13	60Si2Mn	90	16	1130	970	88	68	550	11.6	105	1310
LL/LS/019	13	60Si2Mn	120	13	1130	970	88	68	550	10.2	92	1310
LL/LS/020	13	60Si2Mn	120	16	1130	970	88	68	550	15.4	139	1310



Model	No of Leafs	Material	Leaf With (mm)	Leaf Thickness (mm)	Leaf Length (Stretched) (mm)	Leaf Length (arched) (mm)	Total Arch Height (mm)	Effective Arch Height (mm)	Design Stress (MPa)	Load Capacity (ton)	Total Load Capacity (ton)	Wheelbase (mm)
LL/LS/021	13	60Si2Mn	120	13	1130	970	88	68	550	10.2	92	1310
LL/LS/022	13	60Si2Mn	120	16	1130	970	88	68	550	15.4	139	1310



Model	No of Leafs	Material	Leaf With (mm)	Leaf Thickness (mm)	Leaf Length (Stretched) (mm)	Leaf Length (arched) (mm)	Total Arch Height (mm)	Effective Arch Height (mm)	Design Stress (MPa)	Load Capacity (ton)	Total Load Capacity (ton)	Wheelbase (mm)
LL/LS/023	14	60Si2Mn	120	13	1130	970	88	68	550	10.9	98	1310
LL/LS/024	14	60Si2Mn	120	16	1130	970	88	68	550	16.6	150	1310



# Lonely Lion



Model	No of Leafs	Material	Leaf With (mm)	Leaf Thickness (mm)	Leaf Length (Stretched) (mm)	Leaf Length (arched) (mm)	Total Arch Height (mm)	Effective Arch Height (mm)	Design Stress (MPa)	Load Capacity (ton)	Total Load Capacity (ton)	Wheelbase (mm)
LL/LS/025	15	60Si2Mn	120	13	1130	970	88	68	550	11.7	105	1310
LL/LS/026	15	60Si2Mn	120	16	1130	970	88	68	550	17.8	160	1310



Model	No of Leafs	Material	Leaf With (mm)	Leaf Thickness (mm)	Leaf Length (Stretched) (mm)	Leaf Length (arched) (mm)	Total Arch Height (mm)	Effective Arch Height (mm)	Design Stress (MPa)	Load Capacity (ton)	Total Load Capacity (ton)	Wheelbase (mm)
LL/LS/027	16	60Si2Mn	120	13	1130	970	88	68	550	12.5	113	1310



Model	No of Leafs	Material	Leaf With (mm)	Leaf Thickness (mm)	Leaf Length (Stretched) (mm)	Leaf Length (arched) (mm)	Total Arch Height (mm)	Effective Arch Height (mm)	Design Stress (MPa)	Load Capacity (ton)	Total Load Capacity (ton)	Wheelbase (mm)
LL/LS/028	17	60Si2Mn	120	11	1130	970	88	68	550	9.5	85	1310



Model	No of Leafs	Material	Leaf With (mm)	Leaf Thickness (mm)	Leaf Length (Stretched) (mm)	Leaf Length (arched) (mm)	Total Arch Height (mm)	Effective Arch Height (mm)	Design Stress (MPa)	Load Capacity (ton)	Total Load Capacity (ton)	Wheelbase (mm)
LL/LS/029	12	60Si2Mn	100	11	1220	1020	110	80	550	5.3	48	1360



Model	No of Leafs	Material	Leaf With (mm)	Leaf Thickness (mm)	Leaf Length (Stretched) (mm)	Leaf Length (arched) (mm)	Total Arch Height (mm)	Effective Arch Height (mm)	Design Stress (MPa)	Load Capacity (ton)	Total Load Capacity (ton)	Wheelbase (mm)
LL/LS/030	12	60Si2Mn	100	12	1200	1020	70	65	550	5.3	48	1360



Model	No of Leafs	Material	Leaf With (mm)	Leaf Thickness (mm)	Leaf Length (Stretched) (mm)	Leaf Length (arched) (mm)	Total Arch Height (mm)	Effective Arch Height (mm)	Design Stress (MPa)	Load Capacity (ton)	Total Load Capacity (ton)	Wheelbase (mm)
LL/LS/031	3	55CrMnA	90	22	1130	970	88	64	550	5	45	1310
LL/LS/032	3	55CrMnA	90	25	1130	970	88	64	550	6.5	58	1310



Model	No of Leaves	Material	Leaf With (mm)	Leaf Thickness (mm)	Leaf Length (Stretched) (mm)	Leaf Length (arched) (mm)	Total Arch Height (mm)	Effective Arch Height (mm)	Design Stress (MPa)	Load Capacity (ton)	Total Load Capacity (ton)	Wheelbase (mm)
LL/LS/033	4	55CrMnA	90	20	1130	970	88	64	550	5.5	50	1310
LL/LS/034	4	55CrMnA	120	22	1130	970	88	64	550	6.7	60	1310
LL/LS/035	4	55CrMnA	120	24	1130	970	88	64	550	8	72	1310



Model	No of Leaves	Material	Leaf With (mm)	Leaf Thickness (mm)	Leaf Length (Stretched) (mm)	Leaf Length (arched) (mm)	Total Arch Height (mm)	Effective Arch Height (mm)	Design Stress (MPa)	Load Capacity (ton)	Total Load Capacity (ton)	Wheelbase (mm)
LL/LS/036	4	55CrMnA	90	20	1130	970	88	64	550	5.5	50	1310
LL/LS/037	4	55CrMnA	90	22	1130	970	88	64	550	6.7	60	1310



Model	No of Leaves	Material	Leaf With (mm)	Leaf Thickness (mm)	Leaf Length (Stretched) (mm)	Leaf Length (arched) (mm)	Total Arch Height (mm)	Effective Arch Height (mm)	Design Stress (MPa)	Load Capacity (ton)	Total Load Capacity (ton)	Wheelbase (mm)
LL/LS/038	17	60Si2Mn	100	14, 20, 18	1820		110		550	32	1550	1550



Wheel Size	P.C.D	Center Hole Diameter	Diameter of Bolt Hole NO.of Bolt Hole	Bolt Hole Type	Offset	Disc Thickness	Recommended Tyre
	mm	mm	mm		mm	mm	
9.00V-20	335	281	10-φ26	S/ISO	169	16/14	12.00R20



Wheel Size	P.C.D	Center Hole Diameter	Diameter of Bolt Hole NO.of Bolt Hole	Bolt Hole Type	Offset	Disc Thickness	Recommended Tyre
	mm	mm	mm		mm	mm	
8.5-20	335	281	10-φ26	S/ISO	166	16/14	12.00R20



Wheel Size	P.C.D	Center Hole Diameter	Diameter of Bolt Hole NO.of Bolt Hole	Bolt Hole Type	Offset	Disc Thickness	Recommended Tyre
	mm	mm	mm		mm	mm	
8.75-24	335	281	10-φ26	S/ISO	169/166	16/14	12.00R24
8.5-24	335	281	10-φ26	S/ISO	169/166	16/14	12.00R24



Wheel Size	P.C.D	Center Hole Diameter	Diameter of Bolt Hole NO.of Bolt Hole	Bolt Hole Type	Offset	Disc Thickness	Recommended Tyre
	mm	mm	mm		mm	mm	
7.00T-20	275	214	8-φ32	SR22/JAP	145/135	12/14	9.00R20
7.00T-20	275	214	8-φ26	S/ISO	141/139	12/14	9.00R20
7.00T-20	285.75	220	10-φ26	S/ISO	145	12/14	9.00R20
7.00T-20	285.75	222	10-φ32	SR22/JAP	149	12/14	9.00R20
7.00T-20	222.25	164	6-φ32	SR22/JAP	130	12	9.00R20
7.00T-20	285	221	8-φ32	SR22/JAP	153/150	12/14	9.00R20
7.00T-20	335	281	10-φ26	S/ISO	140	12/14	9.00R20
7.00T-20	285.75	220	10-φ26	S/ISO	151	12/14	9.00R20



Wheel Size	P.C.D	Center Hole Diameter	Diameter of Bolt Hole NO.of Bolt Hole	Bolt Hole Type	Offset	Disc Thickness	Recommended Tyre
	mm	mm	mm		mm	mm	
8.25V-20	335	281	10- $\phi$ 26	S /ISO	162	16/14	11.00R20
8.25V-20	285.75	222	10- $\phi$ 32	SR22/JAP	162	16/14	11.00R20
8.25V-20	285.75	220	10- $\phi$ 26	S /ISO	162	16/14	11.00R20
8.25V-20	285	221	8- $\phi$ 32	SR22/JAP	162	16/14	11.00R20
8.25V-20	275	214	8- $\phi$ 32	SR22/JAP	162	16/14	11.00R20



Wheel Size	P.C.D	Center Hole Diameter	Diameter of Bolt Hole NO.of Bolt Hole	Bolt Hole Type	Offset	Disc Thickness	Recommended Tyre
	mm	mm	mm		mm	mm	
7.50V-20	285	221	8- $\phi$ 32	SR22/JAP	160/156/151	16/14/12	10.00R20
7.50V-20	335	281	10- $\phi$ 26	S/ISO	156/151/148	16/14/12	10.00R20
7.50V-20	275	214	8- $\phi$ 32	SR22/JAP	151/145	16/14/12	10.00R20
7.50V-20	275	220	10- $\phi$ 26	S/ISO	152	14	10.00R20
7.50V-20	275	214	8- $\phi$ 26	S/ISO	149/106	14	10.00R20
7.50V-20	285.75	220	10- $\phi$ 26	S/ISO	152/149	16/14	10.00R20
7.50V-20	285.75	222	10- $\phi$ 32	SR22/JAP	152/150	16/14	10.00R20



Wheel Size	P.C.D	Center Hole Diameter	Diameter of Bolt Hole NO.of Bolt Hole	Bolt Hole Type	Offset	Disc Thickness	Valve type	Recommended Tyre
	mm	mm	mm		mm	mm		
22.5X9.00	335	281	10- $\phi$ 26	S/ISO	161	16/14/12	V3-20-6	12R22.5 295/80R22.5 315/80R22.5
22.5X9.00	335	281	10- $\phi$ 27	SR18/DIN	161/164	16/14/12	V3-20-6	
22.5X9.00	285.75	220	10- $\phi$ 26	S/ISO	161	16/14/12	V3-20-6	
22.5X9.00	285.75	222	10- $\phi$ 32	SR22/JAP	161	16/14/12	V3-20-6	
22.5X9.00	285	221	8- $\phi$ 32	SR22/JAP	161/151	16/14/12	V3-20-6	
22.5X9.00	275	214	8- $\phi$ 32	SR22/JAP	161	16/14/12	V3-20-6	
22.5X8.25	335	281	10- $\phi$ 26	S/ISO	155/151	16/14/12	V3-20-4	11R22.5 285/60R22.5 295/80R22.5
22.5X8.25	285.75	222	10- $\phi$ 32	SR22/JAP	155/151	16/14/12	V3-20-4	
22.5X8.25	285.75	220	10- $\phi$ 26	S/ISO	155/151	16/14/12	V3-20-4	
22.5X8.25	285.75	220	10- $\phi$ 26	S/ISO	157/153	12	TR572 (Outbound)	
22.5X8.25	285	221	8- $\phi$ 32	SR22/JAP	155/151	16/14/12	V3-20-4	
22.5X8.25	275	214	8- $\phi$ 32	SR22/JAP	155/151/142	16/14/12	V3-20-4	



Wheel Size	P.C.D	Center Hole Diameter	Diameter of Bolt Hole NO.of Bolt Hole	Bolt Hole Type	Offset	Disc Thickness	Valve type	Recommended Tyre
	mm	mm	mm		mm	mm		
24.5X8.25	335	281	10- $\phi$ 26	S/ISO	155//151	16/14	V3-20-6	11R24.5



Wheel Size	P.C.D	Center Hole Diameter	Diameter of Bolt Hole NO.of Bolt Hole	Bolt Hole Type	Offset	Disc Thickness	Valve type	Recommened Tyre
	mm	mm	mm		mm	mm		
22.5X11.75	335	281	10-φ26	S/ISO	50/0/-12	16/14/12	TR570C	365/70R22.5
22.5X11.75	285	221	8-φ32	SR22/JAP	45	16/14/12	TR570C	385/65R22.5



Wheel Size	P.C.D	Center Hole Diameter	Diameter of Bolt Hole NO.of Bolt Hole	Bolt Hole Type	Offset	Disc Thickness	Recommened Tyre
	mm	mm	mm		mm	mm	
5.50F-16	222.25	163	6-φ32	SR22/JAP	117/115	12 & 10 & 8	6.5-16
5.50F-16	222.25	163	6-φ32	SR22/JAP	106/98	12 & 10	6.5-16
5.50F-16	190	140	6-φ20.5	SR22/JAP	115/100	12 & 10	6.5-16
5.50F-16	190	140	6-φ20.5	SR22/JAP	65/22	12 & 10	6.5-16
5.50F-16	190	140	6-φ20.5	SR22/JAP	5/0	10	6.5-16
5.50F-16	203.2	140	6-φ32	SR22/JAP	115/109	10/8	6.5-16
5.50F-16	203.2	140	5-φ32	SR22/JAP	111/105	10	6.5-16
5.50F-16	203.2	133	5-φ32	SR22/JAP	111/105	10	6.5-16
5.50F-16	203.2	146	5-φ22.5	S/ISO	107	8	6.5-16
5.50F-16	203.2	146	5-φ29	SR22/JAP	105	10	6.5-16
5.50F-16	205	161	6-φ20.5	S/ISO	125/110	10/8	6.5-16
5.50F-16	180	141	6-φ20.5	S/ISO	115	10 & 8	6.5-16
5.50F-16	180	140	6-φ18.5	Cone 80°/BSF 800	41	6	6.5-16
5.50F-16	180	140	6-φ24	SR22/JAP	41	6	6.5-16
5.50F-16	180	140	6-φ19	SR22/JAP	19	8	6.5-16
5.50F-16	180	140	6-φ19	S/ISO	19	8	6.5-16
5.50F-16	184.15	133	6-φ25.5	Cone 90°/BSF 900	30	6	6.5-16
5.50F-16	184.15	133	5-φ29	Cone 90°/ BSF 900	30	6	6.5-16
5.50F-16	140	110.6	5-φ15	S/ISO	9/-8	8	6.5-16
5.50F-16	140	110	5-φ15	S/ISO	0	8	6.5-16
5.50F-16	208	150	5-φ32	SR22/JAP	111/105	10	6.5-16
5.50F-16	170	133	6-φ17.5	Cone 60°	25	6	6.5-16
5.50F-16	160	115	6-φ15	Cone 60°/BSF 600	0	8	6.5-16
5.50F-16	139.7	107	6-φ15	Cone 60°/BSF 60°	0	5	6.5-16
5.50F-16	140	94.5	5-φ18.5	SR18/DIN	26	8	6.5-16
5.50F-16	190	140	6-φ20.5	SR22/JAP	29	Dual 8+8	6.5-16
5.50F-16	190	140	6-φ20.5	SR22/JAP	40	Dual 6+6	6.5-16
5.50F-16	190	140	6-φ20.5	SR22/JAP	0	Dual 8+8	6.5-16



Wheel Size	P.C.D	Center Hole Diameter	Diameter of Bolt Hole NO.of Bolt Hole	Bolt Hole Type	Offset	Disc Thickness	Valve type	Recommended Tyre
	mm	mm	mm		mm	mm		
22.5X7.50	335	281	10-φ26	S/ISO	151/148/144	45640	V3-20-4	10R22.5 275/70R22.5
22.5X7.50	285.75	222	10-φ32	SR22/JAP	155/151	45640	V3-20-4	
22.5X7.50	285.75	220	10-φ26	S/ISO	151	45640	V3-20-4	
22.5X7.50	275	214	8-φ32	SR22/JAP	151	45640	V3-20-4	
22.5X7.50	285	221	8-φ32	SR22/JAP	155/151	45640	V3-20-4	



Wheel Size	P.C.D	Center Hole Diameter	Diameter of Bolt Hole NO.of Bolt Hole	Bolt Hole Type	Offset	Disc Thickness	Recommended Tyre
	mm	mm	mm		mm	mm	
6.5-16	222.25	163	6-φ32	SR22/JAP	30	Dual8+8	8.25R16
6.5-16	212	161	8-φ24.5	S/ISO	125	12/10	8.25R16
6.5-16	205	161	6-φ20.5	SR22/JAP	125	10	8.25R16
6.5-16	203.2	140	6-φ20.5	SR22/JAP	-35	Dual6+6	8.25R16
6.5-16	190	140	6-φ20.5	SR22/JAP	15	Dual6+6	8.25R16
6.5-16	190	140	6-φ20.5	SR22/JAP	35	Dual6+6	8.25R16
6.5-16	190	140	6-φ20.5	SR22/JAP	81	12/10	8.25R16
6.5-16	222	161	6-φ24.5	S/ISO	125	10	8.25R16
6.5-16	225	176	10-φ27	SR18/DIN	135/125	10	8.25R16



Wheel Size	P.C.D	Center Hole Diameter	Diameter of Bolt Hole NO.of Bolt Hole	Bolt Hole Type	Offset	Disc Thickness	Valve type	Recommended Tyre
	mm	mm	mm		mm	mm		
19.5X7.50	222.25	163	6-φ32	SR22/JAP	137/133/127	12	V3-20-4	265/70R19.5 245/70R19.5
19.5X7.50	275	214	8-φ32	SR22/JAP	139	12	V3-20-4	
19.5X7.5	245	204	6-φ32	S/ISO	129	12	V3-20-4	
19.5X6.75	222.25	163	6-φ32	SR22/JAP	135/115/108	12	PVR-51B	225/70R19.5
19.5X6.75	275	214	8-φ32	SR22/JAP	135	12	PVR-51B	
19.5X6.75	285	221	8-φ32	SR22/JAP	135	12	PVR-51B	
19.5X6.75	225	176	10-26	SR22	130	14	V3-20-4	



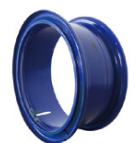
Wheel Size	P.C.D	Center Hole Diameter	Diameter of Bolt Hole NO.of Bolt Hole	Bolt Hole Type	Offset	Disc Thickness	Valve type	Recommended Tyre
	mm	mm	mm		mm	mm		
16X5.50K	203.2	146	5-φ32	SR22/JAP	107	8	PVR181	6.50R16
16X5.50K	203.2	146	5-φ29	SR22/JAP	107	8	PVR181	
16X5.50K	208	146	5-φ32	SR22/JAP	107	8	PVR181	
16X5.50K	190	140	6-φ20.5	SR22/JAP	115	10	PVR181	



Wheel Size	P.C.D	Center Hole Diameter	Diameter of Bolt Hole NO.of Bolt Hole	Bolt Hole Type	Offset	Disc Thickness	Valve type	Recommended Tyre
	mm	mm	mm		mm	mm		
17.5X6.00	222.25	163	6-φ32	SR22/JAP	125/123/117	12/10	PVR-51 A	215/70R17.5 205/80R17.5 215/70R17.5
17.5X6.00	205	161	6-φ32	SR22/JAP	127	12	PVR-51A	
17.5X6.00	205	161	6-φ20.5	S/ISO	115	12	PVR-51A	
17.5X6.00	225	176	10-φ26	S/ISO	123	12	PVR-51A	
17.5X6.00	203.2	146	5-φ29	SR22/JAP	123/118/116	12/10	PVR-51A	
17.5X6.00	208	150	5-φ32	SR22/JAP	115	12	PVR-51 A	
17.5X6.00	225	225	10-26	SR22	123	14	V3-20-4	



Wheel Size	P.C.D	Center Hole Diameter	Diameter of Bolt Hole NO.of Bolt Hole	Bolt Hole Type	Offset	Disc Thickness	Valve type	Recommended Tyre
	mm	mm	mm		mm	mm		
26XDW20	335	281	10-φ27	SR18/DIN	50	12	TRCH3	23.1-26
26XDW20	425	370	10-φ24	SR18/DIN	67.5	18	TRCH	



Wheel Size	Recommended Tyre
22.5*7.50 支撑环	10R22.5 275/70R22.5
22.5*8.25 支撑环	11R22.5 285/60R22.5



## Short Handle Semi Trailer Twist Lock

**Material:** High quality cast steel body and forged steel core. Steel handle with plastic knob

**Finishing:** Shot-blasted and red coating (color customizable)

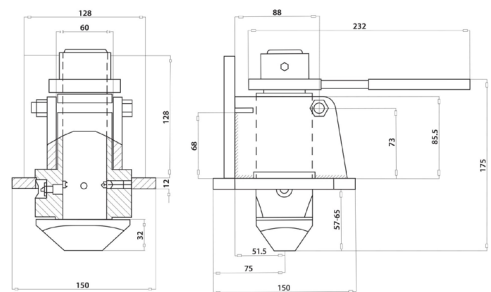
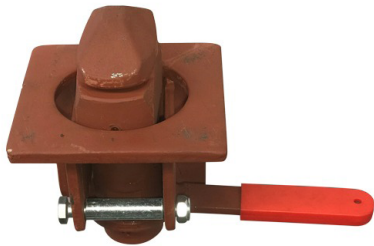
**Load:** Minimum breaking loads tension 500 kN / shear 420 kN

**Mode:** Dual function for manual and semi-automatic mode

**Weight:** 7.4Kgs

**Handle:** Standard short handle configuration

**Customization:** We can manufacture any customized twist locks upon your specifications. Please feel free to contract us!



## Long Handle Semi Trailer Twist Lock

**Material:** High quality cast steel body and forged steel core. Steel handle with plastic knob

**Finishing:** Shot-blasted and red coating (color customizable)

**Load:** Minimum breaking loads tension 500 kN / shear 420 kN

**Mode:** Dual function for manual and semi-automatic mode

**Weight:** 7.4Kgs

**Handle:** Long configuration to avoid combing rail on truck trailer

**Customization:** We can manufacture any customized twist locks upon your specifications. Please feel free to contract us!

