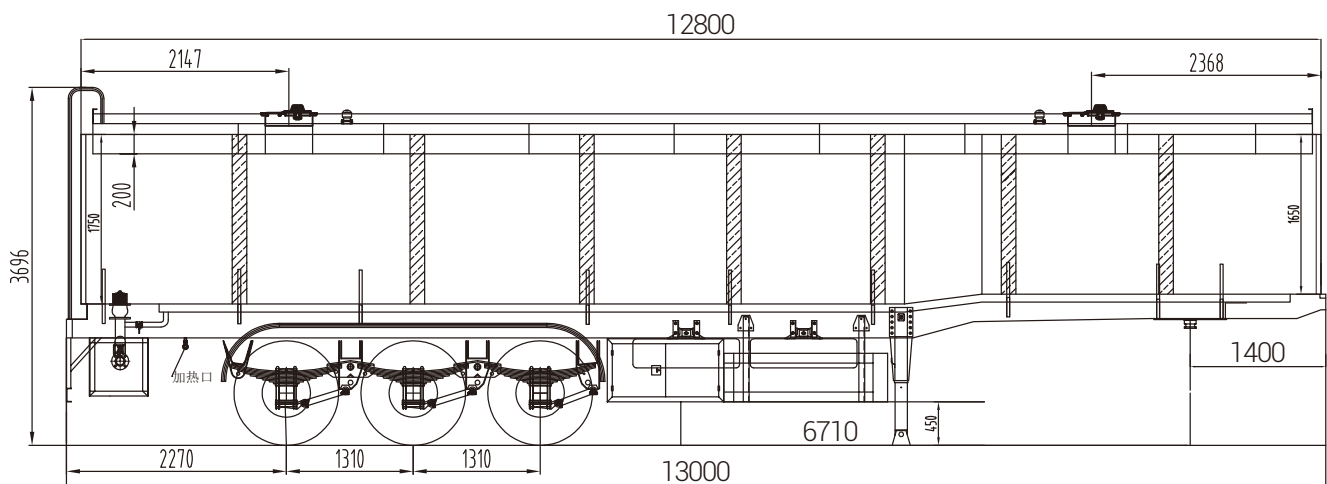




# Lonely Lion

## 35000 Liter Fuel Tanker Trailer



**Note:** The photo and drawing are for reference only. The final design of the semi trailer is upon your specific requirements.



## 35000 Liter Fuel Tanker Trailer

|                        |  |
|------------------------|--|
| <b>Model</b>           | MAX/ST/FT/35/001   |
| <b>General</b>         |  |
| <b>Dimensions</b>      | 11250 mm(Length) x 2500 mm(Length) x 3600mm(Height)  |
| <b>Tare Weight</b>     | 9,000 kg   |
| <b>Payload</b>         | 40,000 kg  |
| <b>GVWR</b>            | 49,000 kg  |
| <b>Tank Body</b>       |  |
| <b>Tank Shape</b>      | Round or square  |
| <b>Tank Capacity</b>   | 35,000 liters + 6 % expansion approx.  |
| <b>Tank Material</b>   | Q235B carbon steel, Tank shell thickness 5 mm , front and rear ends thickness 6mm  |
| <b>Compartments</b>    | 1 to 7 compartments, based on customer needs   |
| <b>Baffles</b>         | 5 mm thick baffles designed to permit the easy flow of fuel inside the tank  |
| <b>Manholes</b>        | Each compartment is equipped with 500mm carbon steel or aluminium alloy manhole cover fitted with bolts and nuts, internal safety valve built into the main hole .   |
| <b>Discharge</b>       | The tank is top loading through manholes and discharged by gravity through manually operated ball valves 3" or 4", located into a lockable discharged box (at one side of tank). Each compartment is equipped with a lower valves 3" or 4" . |
| <b>Discharge Pipes</b> | 4" rubber hose, 2 units, 6 metre/each  |
| <b>Walkway</b>         | The tank is equipped with upper walkway manufactured from stretched steel sheet and equipped with steel walkwall   |
| <b>Ladder</b>          | The tank is equipped with a front or rear ladder to facilitate the arrival to manholes.  |
| <b>Chassis</b>         |  |
| <b>Kingpin</b>         | MAX 2.0/3.5 inch   |
| <b>Landing Gears</b>   | MAX two speed landing gear, driver side crank  |
| <b>Main Beams</b>      | Q345B steel fabricated I beams. Flange width 146 mm, top flange 14 mm thick, bottom flange 16 mm thick. Web height 500 mm, web thickness 8 mm, web stiffeners to prevent beam distortion.  |
| <b>Axles</b>           | 3 Axles*, MAX brand, each axle capable of carrying minimum 13 tons at 120 km/h speed.  |
| <b>Suspensions</b>     | MAX brand standard mechanical suspensions  |
| <b>Brake System</b>    | Dual air brake system, WABCO relay emergency valve   |
| <b>Brake Chambers</b>  | One axle with T30/30 emergency brake chamber, the other two axles with T30 service brake chambers  |
| <b>Rims</b>            | 9.00-22.5, 12 units plus one spare   |
| <b>Tires</b>           | 12.00R22.5, 12 units plus one spare  |
| <b>Electrical</b>      | 24-Volt sealed wiring harness, 7-pin connector at front  |
| <b>Lights</b>          | Standard brake, turn, reverse lamps, one fog lamp  |
| <b>Toolbox</b>         | One toolbox with a set of standard trailer tools   |
| <b>Painting</b>        | Exterior surface treatment by sandblasting, one coat of primer, two coats of finish painting, color chosen by customer   |